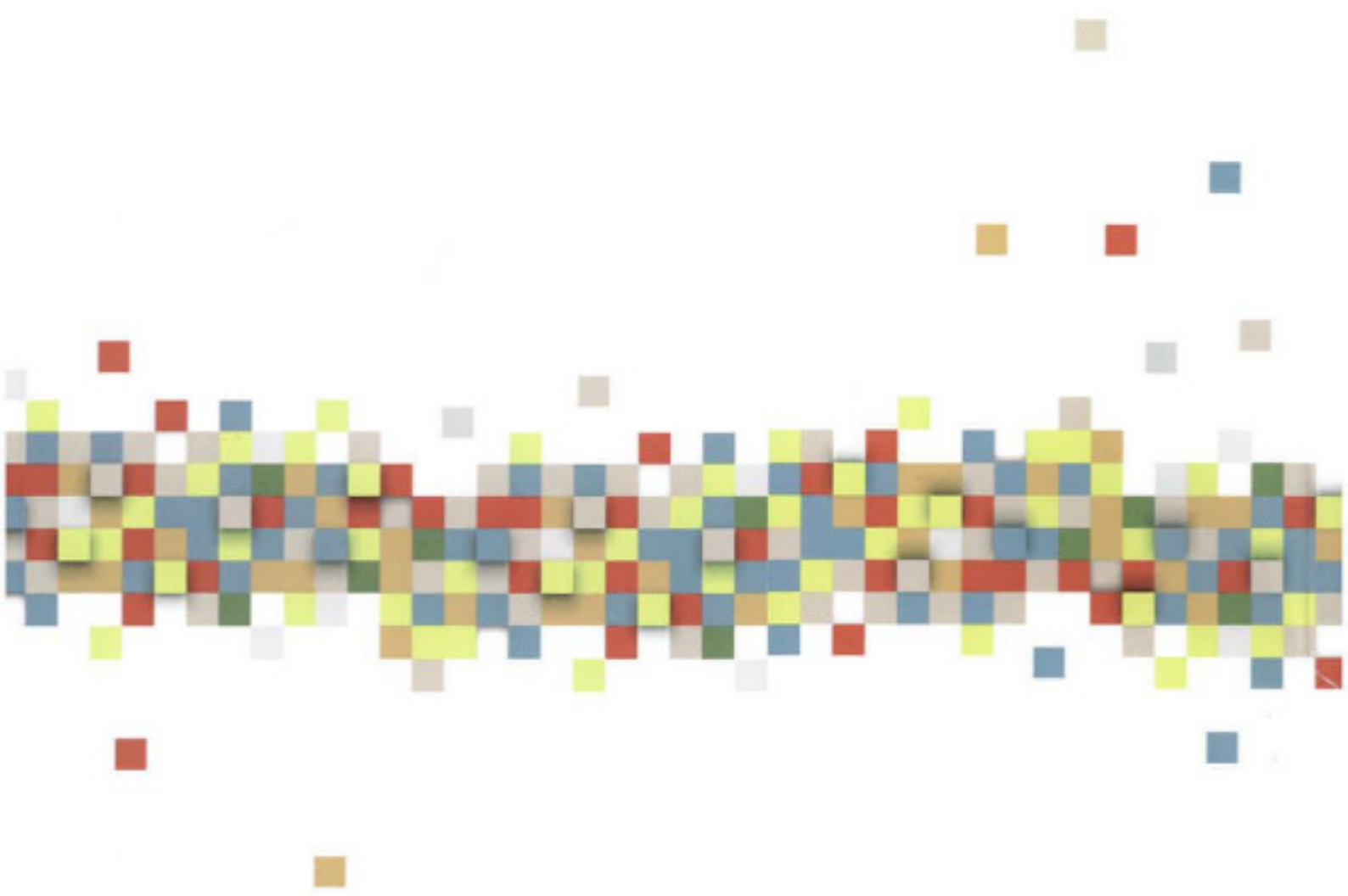


Winter-plan

Winter-brochure 2018-2019

Last update, 27-01-2020



La présente brochure a été sollicitée par le Comité de Concertation Hivernale (CCH) du mois de novembre 2018 pour constituer un outil d'appui aux opérateurs du plan hiver 2018-2019. Elle a été conçue et éditée par la Strada, Centre d'Appui au Secteur Bruxellois de l'Aide aux Sans-abri en novembre 2018. Une attention particulière a été portée à produire une brochure pratique et intuitive tant pour les travailleurs et volontaires du secteur sans-abri que pour les personnes en situation de sans-abrisme. L'offre des services répertoriée est gratuite.

La présente brochure est mise à jour journalièrement dans sa version online téléchargeable ici : <https://lastradapils.brussels/portail/fr/dispositif-hivernal-1/brochure-hiver.html>

Les traductions multilingues (français, néerlandais, arabe, albanais, anglais) proposées sont le fruit de l'engagement et du travail en collaboration avec la Strada. Nous tenons ici à les en remercier.



Personnes de contact :

Des questions ? Des informations à relayer ou mettre à jour ? Des problèmes avec l'emploi des outils ? N'hésitez pas à nous contacter.

- François BERTRAND, chargé de mission (plan hiver, participation et concertation) : T : 02/880.86.89
Mail : fbertrand@lastrada.brussels
- Philippe LAMBOTTE, Chargé de mission IT : T : 02/880.86.89 Mail : plambotte@lastrada.brussels

Éditeur responsable :

Centre d'appui au secteur bruxellois de l'aide aux sans-abri - la Strada asbl
15, rue de l'association - 1000 - Bruxelles - 02/880.86.89

Bruxelles, 1^{er} janvier 2018 (mis à jour le 27-01-2020)

Ce pdf a été créé avec des programmes open-source, en particulier la bibliothèque mpdf (<https://mpdf.github.io>).

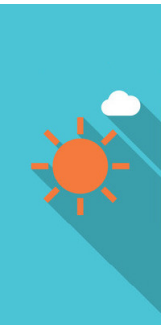
Toute reproduction autorisée sous réserve de citer la source.

Ne pas jeter sur la voie publique

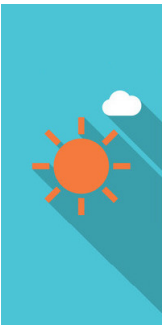
Table of contents

Daytime	3
Where you're welcome during the day :	3
Where to be warm	3
Kids Welcome	7
Where to take a nap? Have a break ?	8
Where to wash?	8
Showers	8
Laundry	11
Public baths	12
Lockers	13
Where to eat	14
Breakfast	14
Lunch	16
Supper (Evening meal)	18
Care	19
Medical care	19
Nursing care	21
Mental health	22
Where to search care for my pet ?	23
Drug use and addiction	24
Social help : where to (re) open / ask for social rights / to receive administrative help?	24
Administrative support	24
CPAS	27
CAW	32
Evening and Night	34
Where to be sheltered at night?	34
Where to seek medical assistance ?	35
Medical care (Evening)	35
Mental Health (Night)	36
Drug use and addiction (evening)	36
Useful Contacts	38
Emergency Social Action Plans	38
A&E's (Emergencies)	38
Police	39
Other useful contacts and listening points	39
volunteering	39

Last update : 27-01-2020



DAYTIME



**WHERE YOU'RE WELCOME
DURING THE DAY :**

WHERE TO BE WARM

**BAR À SOUPE DE WOLUWE-SAINT-PIERRE > 74 RUE
FRANÇOIS GAY WOLUWE-SAINT-PIERRE 1150 > 2019-12-01
2020-01-31**

Warm space
Soups


**MAISON DE QUARTIER MALIBRAN > 10 RUE DE LA DIGUE
IXELLES 1050**

Tuesdays and Thursdays, from 05/11 to 31/03, from 08:30am to
06:00pm

Warm space, open to all
Presence of a multidisciplinary team
Soups, hot drinks and snacks
Dogs not allowed

**CHAUFFOIR D'ETTERBEEK > RUE GÉNÉRAL TOMBEUR, 53
ETTERBEEK 1040 > 2019-11-15 2020-04-30**

Monday to Friday from 8:30 AM to 07:00 PM
Saturday and Sunday from 9:00 AM to 05:00 PM

- 
- Warm space, open to all
 - support and guidance
 - Hot drinks

**RESTAURANT SOCIAL LA RENCONTRE > RUE DE LA SENNE
63 BRUXELLES 1000**

>02/514.33.32
6d/7 : 10am to 7 pm. (Day off : Monday)
Wednesday : noon to 7pm
Warm space
Tea - Coffee (50 cent)

**ENTRAIDE DE SAINT-GILLES > RUE DE L'EGLISE 59
BRUXELLES 1060**

Open from 8AM to noon.
Social services: Monday to Friday from 8:30AM to 11:00 AM

NATIVITAS > 116-118, RUE HAUTE BRUXELLES-VILLE 1000

>02/512.02.35
Monday to Friday: 9:30 AM to 5PM.
Sale of drinks (20 cents to 25 cents).
Sale of clothes: Tuesday and Thursday for men / Friday for women and children.

L'ILÔT > 33A, PARVIS DE SAINT-GILLES SAINT-GILLES 1060

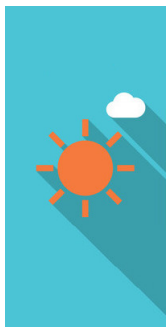
>02/537.33.33

- Monday to Sunday from 8:30 AM to 3 PM

**CHAUFFOIR DE SCHAERBEEK > ÉGLISE SAINTE-SUZANNE,
AVENUE GUSTAVE LATINIS 50 SCHAERBEEK 1030 >
2019-11-04 2020-04-30**

Every day of the week from 9am to 4pm (Monday at 10am), from November 4th, 2019 to April 30th, 2020

- Warm space, open to all
- Rest area
- Warm drinks, bread and fruits



**JAMAIS SANS TOIT > 43, RUE DE VILLERS BRUXELLES-VILLE
1000 > 2019-11-16**

>02/551.17.77

- **Monday to sunday 9am to 5pm**
- Rest area
- Shower (upon availability)

**ESPACE SOCIAL TÉLÉSERVICE > 27, BD DE L'ABATTOIR
ANDERLECHT 1070**


>02/548.98.00

- Monday to Friday from 8:00 AM to 01 PM and from 2 PM to 5 PM

LATITUDE NORD > 2, PLACE SOLVAY SCHAERBEEK 1030

>02/201.65.50

- permanency: Monday, Wednesday and friday from 9:30am to 12am
- Without appointment: Thursday from 4:30 pm to 7:30 pm and Tuesday (only for women) from 9:00 am to noon



Heated space open to all public
Social accompaniment
Administrative instructions
Needle exchange (every day during office hours)

**DOUCHEFLUX > 84, RUE DES VÉTÉRINAIRES ANDERLECHT
1070**

>02/319.58.27

- Tuesday, Thursday and Friday from 8:30am to 4:00pm
- Wednesday from 8:30am to noon (1pm to 5pm reserved for women)
- Saturday from 10:30am to 4:00pm

**SOURCE - LA RENCONTRE > 63, RUE DE LA SENNE
BRUXELLES-VILLE 1000**

>02/514.33.32

- Tuesday from noon to 5:30 PM
- Monday to Friday from 10:30 AM to 5:30 PM
- in winter: Tuesday from noon to 7PM and Wednesday to Sunday from 10 AM to 7 PM

Day care center with psychosocial help desk and support
Computer : 12:30pm to 5:30pm

**BIJ ONS - CHEZ NOUS > KARTUIZERSSTRAAT, 60 BRUSSEL-
STAD 1000**

>02/513.35.96

- 10AM to 13PM (Monday to Friday)

PIERRE D'ANGLE > 153, RUE TERRE-NEUVE BRUXELLES-VILLE 1000

>02/513.38.01

- Monday to Sunday, from 1.30pm to 6:30pm

RESTOJET > 36, PLACE CARDINAL MERCIER JETTE 1090

>0499/51.21.50

- Monday to Friday, from 9am to 5pm

KIDS WELCOME

HOBO > 24, RUE DU BOULET BRUXELLES-VILLE 1000

>02/514.26.93

Monday: 9 AM to 1 PM

Tuesday - Thursday: noon to 6 PM

Friday: 9 AM to 4 PM

Home, activity, etc.

SOURCE - LA RENCONTRE > 63, RUE DE LA SENNE BRUXELLES-VILLE 1000

>02/514.33.32

Tuesday from noon to 5:30PM

Wednesday to Sunday from 10AM to 5:30PM

in winter: Tuesday from noon to 7PM and Wednesday to Sunday from 10AM to 7PM

Day reception center.

Basic hygiene kit + child / baby supplies available for free (please try to be punctual because it's a limited service).

Home / specific care for children between 2 years old and 11 years via the Bubble Tree (l'Arbre à Bulles).



WHERE TO TAKE A NAP? HAVE A BREAK ?

PIERRE D'ANGLE > 153, RUE TERRE-NEUVE BRUXELLES-VILLE 1000

>02/513.38.01

- Monday to Sunday 1.30pm to 6:30pm

Registration required

JAMAIS SANS TOIT > 43, RUE DE VILLERS BRUXELLES-VILLE 1000 > 2019-11-16

>02/551.17.77

- From Monday to sunday from 9am to 5pm

Rest area

First reception

Social services and support

WHERE TO WASH?

SHOWERS

RESTOJET > 36, PLACE CARDINAL MERCIER JETTE 1090

>0499/51.21.50

Monday to Friday at 9:30 am and 4 pm

Free shower

MISSIONNAIRES DE LA CHARITÉ SAINT-GILLES > AVENUE DU ROI 69 SAINT-GILLES 1060

>025394117
Wednesday from 9AM to 10AM (free)

NATIVITAS > 116-118, RUE HAUTE BRUXELLES-VILLE 1000

>02/512.02.35

- Every day except Saturday 9:30am to 11:30am

Showers at 1€

SOEURS DE MÈRE THÉRÉSA > 69, AV. DU ROI SAINT-GILLES 1060

>02/539.41.17

- Wednesday 9 to 10am

PIERRE D'ANGLE > 153, RUE TERRE-NEUVE BRUXELLES-VILLE 1000

>02/513.38.01

- Monday to Sunday 1.30 to 6pm

registration required via phone at 1PM

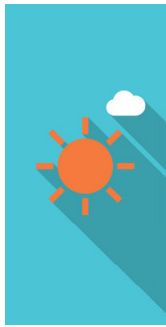
BIJ ONS - CHEZ NOUS > KARTUIZERSSTRAAT, 60 BRUSSEL-STAD 1000

>02/513.35.96

- Monday, Tuesday, Thursday and Friday from 10:00 AM to 03:00 PM

Shower at 1 €

Free cloakroom (subject to availability)





ROLLING DOUCHE > TOUT LE TERRITOIRE BRUXELLOIS

>0474/41.40.07

On booking :

- Monday to Friday

Static permanence :

- Monday 2 to 6pm: Place Flagey
- Wednesday 2 to 6pm Rue des sols (Central Station)
- Friday 2 to 6pm: Esplanade du Midi (South Station)

**LA CONSIGNE ARTICLE 23 > 28, BD DE L'ABATTOIR
ANDERLECHT 1000**

>02.548.98.00

Monday to Friday from 9 to noon

Shower at 1 €

Foot baths

Shaving

Massage (one Tuesday out of 2)

LA FONTAINE > 346, RUE HAUTE BRUXELLES-VILLE 1000

Open from 9.30 AM to 01.30 PM (in the winter : 02.30 PM), on
monday, tuesday, thursday and friday.

- For women : open on 9.30 AM, without registration
- For men : registration at 8.30 AM and opening on 8.30 AM or
11.00 AM

**DOUCHEFLUX > 84, RUE DES VÉTÉRINAIRES ANDERLECHT
1070**

>02/319.58.27

- Tuesday to Friday: 08:30am to noon

- Saturday to Sunday: 10:30am to 2:30pm
 - Wednesday for ladies: from 1:00pm to 3:00pm
- Showers at 1€

L'ILÔT > 33A, PARVIS DE SAINT-GILLES SAINT-GILLES 1060

>02/537.33.33

- Monday to Sunday 9.30am to 11am for showers

Showers at 1.50€

LAUNDRY

**ENTRAIDE DE SAINT-GILLES > RUE DE L'EGLISE 59
BRUXELLES 1060**

Laundry at 1 €

L'ILÔT > 33A, PARVIS DE SAINT-GILLES SAINT-GILLES 1060

>02/537.33.33

- Monday to Sunday 9.30 to 11am

laundry at 2€

**DOUCHEFLUX > 84, RUE DES VÉTÉRINAIRES ANDERLECHT
1070**

>02/319.58.27

Tuesday> Friday from 8.30am to 11am

Wednesday from 1pm to 3pm (afternoon reserved for women)

saturday> sunday from 11:30am to 3pm

Laundry at 1€/3Kg





BULLE ASBL > SERVICE DE LESSIVE MOBILE GRATUIT TOUTE LA RÉGION BRUXELLOISE

>0487/44.88.68

Monday: Place Flagey from 2pm to 6pm

Wednesday: at Latitude Nord (north station) from 1pm to 4pm

Thursday: in L'uzinne from 2pm to 6pm

Friday: South Station (Esplanade of Europe) from 2pm to 6pm

Booking on 0487 / 44 88 68

LA FONTAINE > 346, RUE HAUTE BRUXELLES-VILLE 1000

Open from 9.30 to 13.30 (in the winter : 14.30), on monday, tuesday, thursday and friday.

- For women : open on 9.30, without registration
- For men : registration at 8.30 and opening on 9.30 or 11.00

LA CONSIGNE ARTICLE 23 > 28, BD DE L'ABATTOIR ANDERLECHT 1000

>02.548.98.00

Monday to Friday from 9am to noon

Laundry at 1€

PUBLIC BATHS

BAINS DE BRUXELLES > 28, RUE DU CHEVREUIL BRUXELLES-VILLE 1000

>02/511.24.68

- Tuesday to Saturday 7.30 am to 5pm

Bring the soap and your towel. (€ 2.50)

LOCKERS

RESTOJET > 36, PLACE CARDINAL MERCIER JETTE 1090

>0499/51.21.50

Monday to Friday at 9:30AM and 04:00PM

Lockers available for 0.50€/week.

L'ILÔT > 33A, PARVIS DE SAINT-GILLES SAINT-GILLES 1060

>02/537.33.33

- from 8.30am to 3pm

Lockers for 1€/week

DOUCHEFLUX > 84, RUE DES VÉTÉRINAIRES ANDERLECHT 1070

>02/319.58.27

Tuesday, Thursday and Friday from 8:30am to 5pm

Wednesday from 8:30am to noon (1pm to 5pm reserved for women)

Saturday and Sunday from 10:30am to 3pm

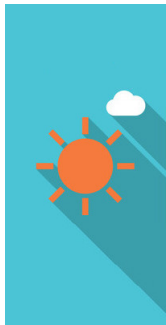
Lockers (1, 1.5€ or 2€ [depend the size])

LA CONSIGNE ARTICLE 23 > 28, BD DE L'ABATTOIR ANDERLECHT 1000

>02.548.98.00

- Monday to friday 9 am to noon

Lockers for 1€/mounth





**JAMAIS SANS TOIT > 43, RUE DE VILLERS BRUXELLES-VILLE
1000**

>02/551.17.77

• Monday to Sunday 9am to 5pm

Lockers for 2.40€/month

WHERE TO EAT

BREAKFAST

RESTOJET > 36, PLACE CARDINAL MERCIER JETTE 1090

>0499/51.21.50

Monday to Friday from 9:30 to 11:00

Free breakfast

**LA CONSIGNE ARTICLE 23 > 28, BD DE L'ABATTOIR
ANDERLECHT 1000**

>02.548.98.00

Monday to Friday from 9am to 1pm

Breakfast ((subject to availability)

**ENTRAIDE DE SAINT-GILLES > RUE DE L'EGLISE 59
BRUXELLES 1060**

Monday to Friday from 8:30am to 10:00am : coffee and free
breakfast.

Soup from 10:15am to 11am.

Social support: Monday to Friday from 8:30am to 11am.

EDUCATEURS DE RUE DE LA COMMUNE DE SAINT-GILLES > RUE VANDERSCHRICK 71 SAINT-GILLES 1060

>02/539.23.91

Every first and third Monday from 9:00am to 11:00am
Free breakfast in the South Station.

RESTAURANT SOCIAL LA RENCONTRE > RUE DE LA SENNE 63 BRUXELLES 1000

>02/514.33.32

Open 6d/7 from 10am to 7pm. (not the monday)
Tuesday at noon.
Free breakfast at 10.15am.

RESTO DU COEUR DE SAINT-GILLES > 22, RUE DE BOSNIE SAINT-GILLES 1060

>02/538.92.76

- Monday to Friday from 8.30 AM to 10 AM

Free breakfast

L'ILÔT > 33A, PARVIS DE SAINT-GILLES SAINT-GILLES 1060

>02/537.33.33

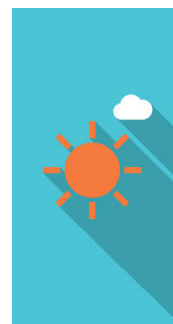
- Monday to Sunday at 8.30am (with ticket)

Breakfast (1€)

Coffie and juice (0.30€)

PETITES SOEURS DES PAUVRES > 266, RUE HAUTE BRUXELLES-VILLE 1000

>02/512.13.80



- Monday to Sunday 9am to 10am

Distribution of sandwiches

BIJ ONS - CHEZ NOUS > KARTUIZERSSTRAAT, 60 BRUSSEL-STAD 1000

>02/513.35.96

- Monday to Saturday 7am to 11.30am

Free breakfast with drinks (subject to availability).

Coffie (0.30€)

LUNCH

RESTO DU COEUR DE SAINT-GILLES > 22, RUE DE BOSNIE SAINT-GILLES 1060

>02/538.92.76

11am to 1pm (close at 12:45)

Soup, bread, cheese and cured meats (for free).

NATIVITAS > 116-118, RUE HAUTE BRUXELLES-VILLE 1000

>02/512.02.35

Monday to Friday every two Saturdays from 12:00pm to 1:30pm.

Lunch for 1,50€ (Lunch, coffee and dessert) or 2€ (with soup)

MISSIONNAIRES DE LA CHARITÉ SAINT-GILLES > AVENUE DU ROI 69 SAINT-GILLES 1060

>025394117

Wednesday, Friday and Saturday: free hot meal from 2:30PM to 3:15PM. Second service at 3:15PM.

Tuesday: free meal at 3:15 pm

Sunday: free meal at 4PM and 4:45PM.
Closed on Mondays and Thursdays.

**BIJ ONS - CHEZ NOUS > KARTUIZERSSTRAAT, 60 BRUSSEL-
STAD 1000**

>02/513.35.96

Monday to Saturday from 11:30 AM to 3 PM

Lunch : 1€

Drinks : 0.30€

Soup and bread (subject to availability)

POVERELLO > 105, RUE VERTE SCHAERBEEK 1030

>02/2019.98.62

- Monday to Friday from 12 to 3 PM (not in public holiday and the weekend)

Lunch + Dessert : 1€

Soup, drinks, coffee and tea : 0,20€

Breakfast (in pack) : 1€

L'ILÔT > 33A, PARVIS DE SAINT-GILLES SAINT-GILLES 1060

>02/537.33.33

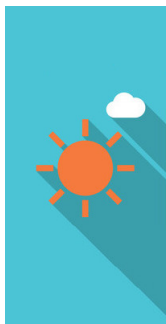
- Monday to Sunday at noon

Lunch (with ticket)

**SOURCE - LA RENCONTRE > 63, RUE DE LA SENNE
BRUXELLES-VILLE 1000**

>02/514.33.32

- Monday to Sunday at 12:30pm



Free meal (breakfast / soup and bread / full dinner) subject to availability.

Tea and coffee at 0.50 €



RESTOJET > 36, PLACE CARDINAL MERCIER JETTE 1090

>0499/51.21.50

Monday to Friday from 11.30am to 2.30pm

Soup 0,50€

Lunch 2€

SUPPER (EVENING MEAL)

RESTAURANT KAMIANO > ÉGLISE DES RICHES CLAIRES RUE DES RICHES CLAIRES 23 BRUXELLES 1000

Thursday evening from 6 p.m. to 7:30 p.m. (last entry)
full hot meal (soup, main course and dessert) free (priority members)

RESTO DU COEUR DE SAINT-GILLES > 22, RUE DE BOSNIE SAINT-GILLES 1060

>02/538.92.76

4:30pm to 7pm

Warm space (Soup, bread)

EDUCATEURS DE RUE DE LA COMMUNE DE SAINT-GILLES > RUE VANDERSCHRICK 71 SAINT-GILLES 1060

>02/539.23.91

The second and fourth Tuesdays from 6pm to 9pm

Free coffee, soup and sandwiches into the South Station (Gare du midi).

**PROTESTANTS SOCIAAL CENTRUM > CANSSTRAAT, 12
ELSENE 1050**

>02/512.80.80

- Monday to Friday at 6pm

**SOURCE - LA RENCONTRE > 63, RUE DE LA SENNE
BRUXELLES-VILLE 1000**

>02/514.33.32

- Monday to Sunday at 5.30pm

Soup + bread (subject to availability)

Free lunch (80 seats max)

Tea and coffee 0.50€

CARE

MEDICAL CARE

**ASBL - SOLIDARITÉ GRANDS FROIDS > RUE DE DANEMARK
74 SAINT-GILLES 1060**

>0477 33 85 47

Doctor and nurse: Every Tuesday, Thursday and Friday from noon to 04pm.

Cloakroom: Every Tuesday, Thursday and Friday from noon to 4pm.

Access to services only on presentation of a paper from your social worker or educator.

FREE CLINIC > CHAUSSÉE DE WAVRE 154/A IXELLES

>02 512 13 14



- Monday to Friday 8:45am to 6:30pm

MÉDECINS DU MONDE >

Monday: from 6:30pm to 8:45pm: Central Station - Rue des Sols

Tuesday: from 3pm to 6pm: Metro Yzer - Place sainteclette / from 6:30pm to 8:45pm : Midi Station - Esplanade of Europe

Thursday: from 3pm to 6pm: Metro Yzer - Place sainteclette / from 6.30pm to 8.45pm: Gare du Nord - Simon Bolivard Square

- Free mobile medical consultations

GARDE BRUXELLOISE > 2, RUE J. DE BROUCHOVEN DE BERGEYCK BRUXELLES-VILLE 1000

>02/201.22.22

- Monday to Friday from 9am to 6pm
- For everyone
- General Medical Consultations

MAISON D'ACCUEIL SOCIO-SANITAIRE DE BRUXELLES (MASS) > 16-18 RUE DE WOERINGEN BRUXELLES-VILLE 1000

>02/505.32.97 | 02/205.32.90

- Monday, Tuesday, Wednesday, Friday from 10:00am to 6:30pm
- Thursday from 1.30 pm to 6.30 pm
- Drug users
- Medical, nursing and social and mental health

**CLIP - DUNE > 124, AVENUE HENRI JASPAR SAINT-GILLES
1060**

>02/538.70.74

Médecin :

- Thursday from 2pm to 4pm and monday from 7pm to 9pm

Medibus (place Saintcetelette Molenbeek) :

- Monday (ribaucourt), tuesday and thursday (Molenbeek) from 3pm to 6pm

For drug users:

nursing, general medical care

reducing the risks associated with drug use (e.a. access to sterile injection equipment)

medico-psychosocial accompaniment

NURSING CARE

LA FONTAINE > 346, RUE HAUTE BRUXELLES-VILLE 1000

Open from 9.30 to 13.30 (in the winter : 14.30), on monday, tuesday, thursday and friday.

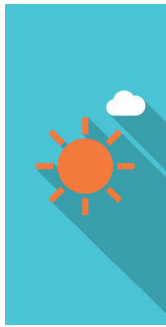
- For women : open on 9.30, without registration
- For men : registration at 8.30 and opening on 9.30 or 11.00

- nursing care
- dental care
- lice/ treatment

**DOUCHEFLUX > 84, RUE DES VÉTÉRINAIRES ANDERLECHT
1070**

>02/319.58.27

Tuesday, Thursday and Friday from 8:30am to 4:00pm



Wednesday from 8:30am to noon (1:00pm to 5:00pm reserved for women)

Saturday and Sunday from 10:30am to 4:00pm

- Nurse care

INFIRMIERS DE RUE > TOUTE LA RÉGION

>0488/11.93.55

- Monday to Friday 9am to 1pm and from 2 to 5:30pm
- Nursing care
- Street work

MENTAL HEALTH

SERVICE SOCIAL JUIF > 68, AVENUE DUCPÉTIAUX SAINT-GILLES 1060

>02/538.81.80

- From Monday to Friday from 8.30am to 12.30pm and from 01:30pm to 5pm
- Mental health (Psychologists, Psychiatrics)
- Psychiatrics experts for persons victims of wars

SERVICE DE SANTÉ MENTALE ULYSSE > 52, RUE DE L'ERMITAGE IXELLES 1050

>02.533.06.70

- Permanency: Monday, Tuesday and Wednesday from 9:30am to 6pm and Thursday, Friday from 9:30am to 5pm

- Without appointment: Monday, Tuesday, Wednesday and Friday from 2pm to 4pm / Thursday from 10am to noon.
- Medical, nursing and social and mental support for refugees and war victims and organised violence victims

EQUIPE MOBILE DE CRISE BRUXELLES EST >

>0490/11.42.00

- Contact only by phone, Monday to Friday (Except Holidays) from 9am to 9pm
- Multidisciplinary intervention team / Mental Care

EQUIPES HERMÈS+ ET TANDEM+ >

>02/201.22.00

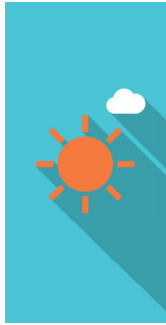
- Contact only by phone, Monday to Friday (Except Holidays) from 9am to 3pm
- Multidisciplinary intervention team / Mental Care

WHERE TO SEARCH CARE FOR MY PET ?

DISPENSARE DE LA FONDATION PRINCE LAURENT > 72-73, PLACE DU JEU DE BALLE BRUXELLES-VILLE 1000

>02/511.66.46

- Monday to Friday from 10 to 12pm
- Closed Monday, November 11 and December 23 to 27



DRUG USE AND ADDICTION

LATITUDE NORD > 2, PLACE SOLVAY SCHAERBEEK 1030

>02/201.65.50

Syringe exchange counter, with a used syringe recuperator available 24 hours a day

Monday to friday: 8:30am - 4:30pm

Psychological support and prevention for drug takers.

SOCIAL HELP : WHERE TO (RE) OPEN / ASK FOR SOCIAL RIGHTS / TO RECEIVE ADMINISTRATIVE HELP?

FRONT COMMUN DES SDF >

concrete information for address of reference only by GSM or mail:

This email address is being protected from spambots. You need JavaScript enabled to view it. 0479/68 60 20: 7 days on 7 »

ADMINISTRATIVE SUPPORT

ASBL PLATEFORME CITOYENNE DE SOUTIEN AUX RÉFUGIÉS - BXLREFUGÉES > RUE WASHINGTON 186 BRUXELLES 1050

This email address is being protected from spambots. You need JavaScript enabled to view it.

Open Monday to friday from 1:30PM to 5PM and Saturday from 1:30pm to 3:30pm. (Wednesday from 10:30am to 5pm)

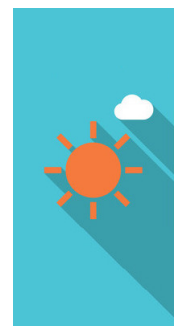
Services:

- Social Information, Administrative Service (SISA) and asylum procedures (and orientation to other structures) on Mondays,

Wednesdays and Fridays from 2PM to 5PM. This email address is being protected from spambots. You need JavaScript enabled to view it.

- French / Dutch / English lessons every afternoon This email address is being protected from spambots. You need JavaScript enabled to view it.

- Computer Wednesday and Saturday afternoons This email address is being protected from spambots. You need JavaScript enabled to view it.



EDUCATEURS DE RUE DE LA COMMUNE DE SAINT-GILLES > RUE VANDERSCHRICK 71 SAINT-GILLES 1060

>02/539.23.91

Social services: Tuesday, Wednesday and Thursday: 10am to 1pm.

LATITUDE NORD > 2, PLACE SOLVAY SCHAERBEEK 1030

>02/201.65.50

Permanence without appointment: Monday, Wednesday and Friday from 9:30 to noon

Heated space open to all public

Social accompaniment

Administrative instructions

Needle exchange (every day during office hours)

LA POISSONERIE > 214,RUE DU PROGRÈS BRUXELLES 1000

Monday to Friday (only with an appointment) : 0479/68.60.20

Help and support in the reopening of social rights

Support for opening and maintaining a reference address

ENTRAIDE DE SAINT-GILLES > RUE DE L'EGLISE 59 BRUXELLES 1060

Social services: Monday to Friday from 8:30 to 11am.



BIJ ONS - CHEZ NOUS > KARTUIZERSSTRAAT, 60 BRUSSEL-STAD 1000

>02/513.35.96

Every day from 9am to 3pm except Wednesday

Social assistance from 10am to 4.30pm

NATIVITAS > 116-118, RUE HAUTE BRUXELLES-VILLE 1000

>02/512.02.35

Social service Tuesday, Wednesday and Thursday from 9:30am to 11:30am

Legal office Monday from 10am to 11:30am

RESTO DU COEUR DE SAINT-GILLES > 22, RUE DE BOSNIE SAINT-GILLES 1060 > 2019-11-01 2020-03-31

>02/538.92.76

Monday, Tuesday, Thursday and Friday from 9am to 10am and from 11am to 1pm

RESTAURANT SOCIAL LA RENCONTRE > RUE DE LA SENNE 63 BRUXELLES 1000

>02/514.33.32

Social service: Tuesday to Sunday from 11am to 12pm and from 2pm to 5:30pm (Tuesday it's only during the afternoon)

SOURCE - LA RENCONTRE > 63, RUE DE LA SENNE BRUXELLES-VILLE 1000

>02/514.33.32

- Tuesday from 12pm to 7pm

From Wednesday to Sunday from 10am to 7pm

Welcome center + support

Social permanence from Tuesday to Friday.

Computer workshop available (12u30pm to 5:30pm).

PIERRE D'ANGLE > 153, RUE TERRE-NEUVE BRUXELLES-VILLE 1000

>02/513.38.01

- Monday to Thursday from 8am to 4pm
- Friday from 8am to 2pm

L'ILÔT > 33A, PARVIS DE SAINT-GILLES SAINT-GILLES 1060

>02/537.33.33

- Monday to Sunday from 8.30am to 6pm
- Wednesday from 8.30am to 3pm

Administrative and psycho-social support available

DOUCHEFLUX > 84, RUE DES VÉTÉRINAIRES ANDERLECHT 1070

>02/319.58.27

psychosocial permanence:

Tuesday > Friday - 09:00am to 1:00pm and Wednesday for women:
1:00pm to 5:00pm

legal permanence (persons without residence permit):

Thursday - noon to 3:00pm

CPAS

CPAS D'ANDERLECHT > 62-64 AVENUE RAYMOND VANDER



BRUGGEN ANDERLECHT 1070

>02/529.41.20

- Monday to Friday from 7:30am to 11:30am and 1pm to 3.30pm

CPAS D'AUDERGHEM > 87, AVENUE DU PAEPEDELLE AUDERGHEM 1160

>02/679.94.10 || 02/679.94.61

- Opening hours from 9am to 12am
- Afternoons on appointment

CPAS DE BERCHEM-ST-AGATHE > 88, AVENUE DU ROI ALBERT BERCHEM-SAINTE-AGATHE 1082

>02/482.13.27

- Opening Hours from 8.30 to 12am
- 1 to 4.30pm on appointment

CPAS DE LA VILLE DE BRUXELLES > 298 A, RUE HAUTE BRUXELLES-VILLE 1000

>02/543.61.11 || 02/543.60.90

- Monday to Thursday from 8 to 12am and 1 to 5pm
- Friday from 8 to 12am and 1 to 3pm

CPAS D'ETTERBEEK > 2, SQUARE DOCTEUR JEAN JOLY ETTERBEEK 1040

>02/627.21.11

- Monday to Friday from 8.30 to 12am and 2 to 4pm

**CPAS D'EVERE > 11, SQUARE SERVAES HOEDEMAEKERS
EVERE 1140**

>02/247.65.65

- Monday to Friday from 8.30 am to 1pm
- Tuesday from 5 to 8pm

CPAS DE FOREST > 35, RUE DU CURÉ FOREST 1190

>02/349.63.00

- Monday to Friday from 8 to 11.30am
- Afternoon on appointments

**CPAS DE GANSHOREN > 63, AVENUE DE LA RÉFORME
GANSHOREN 1083**

>02/422.57.57

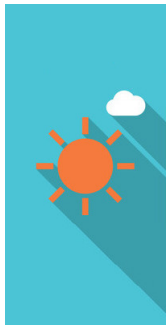
- Monday to Friday from 8 to 12am and 1 to 4.30pm
- Social support from 8.30 to 11am

**CPAS D'IXELLES > 92, CHAUSSÉE DE BOONDAEL IXELLES
1050**

>02/641.54.59

- Monday to Friday from 8.0 to 11.45am and 1.15 to 3.30pm
- Thursday from 1.15 to 3.30pm

CPAS DE JETTE > 47/49, RUE DE L'ÉGLISE SAINT-PIERRE



JETTE 1090

>02/422.46.11

- Monday to Friday from 8.30 to 12.15am and 1.15 to 4pm

CPAS DE KOEKELBERG > 39, RUE FRANÇOIS DELCOIGNE KOEKELBERG 1081

>02/412.16.11

- Monday to Friday from 8.30 to 11am

CPAS DE MOLENBEEK ST-JEAN > 14, RUE ALPHONSE VANDENPEEREBOOM MOLENBEEK 1080

>02/412.53.11

- Monday to Friday from 7.55 to 12am and 12.30am to 4.45pm
- Summer opening hours from 7 am to 2pm

CPAS DE ST-GILLES > 40, RUE FERNAND BERNIER SAINT GILLES 1060

>02/600.54.11

- Monday to Friday from 8 to 12am

CPAS DE SAINT JOSSE TEN NOODE > 88, RUE VERBIST SAINT-JOSSE-TEN-NOODE 1210

>02/220.29.11

- Monday to Thursday 8.45 to 11.45 am
- or on appointment

**CPAS DE SCHAERBEEK > BOULEVARD AUGUSTE REYERS 70
SCHAERBEEK 1030**

>02/240.30.80

- Monday to Thursday from 8 to 12am and from 12.45am to 4.30pm

CPAS D'UCCLE > 860, CHAUSSÉE D'ALSEMBERG UCCLE 1180

>02/370.75.11

- Monday to Friday from 8.30 to 12.30am and 13.30 to 5pm

**CPAS DE WATERMAEL-BOITSFORT > 69, RUE DU LOU TRIER
WATERMAEL-BOITSFORT 1170**

>02/663.08.00

- Monday to Friday from 8.30 to 10.30am afternoon on appointments

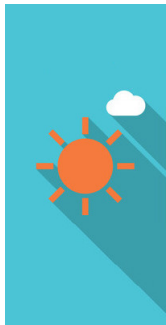
**CPAS DE WOLUWE ST LAMBERT > WOLUWE-SAINT-LAMBERT
1200**

>02/777.75.11

- Monday to Friday from 8.30 to 12am and 1.30 to 5pm (on appointments)

**CPAS DE WOLUWE ST PIERRE > 15, DRÈVE DES SHETLANDS
WOLUWE-SAINT-PIERRE 1150**

>02/773.59.00



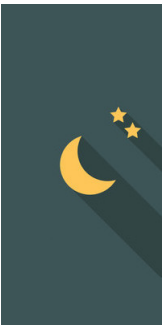
- From 8.30 to 11am and the afternoons on appointments

CAW

CAW DE BRUXELLES > 19A, RUE DU POINÇON BRUXELLES-VILLE 1000

>02/289.60.10

- Monday to Friday from 9 to 12pm (closed on Thursday)



EVENING AND NIGHT

WHERE TO BE SHELTERED AT NIGHT?



PORTE D'ULYSSE > RUE DU PLANEUR 6 HAREN 1130

7:30pm to 10pm

Registration (Maximilian Park) and the exit of the center is scheduled for 11:30 maximum.

SAMUSOCIAL > BRUXELLES-VILLE 1000

> Numéro vert: 0800/99.340

- For everyone

NB: Monday to Sunday:

For families - 1st distribution of place at 4pm and the second at 7pm

Single person - 1st place distribution at 5pm and the second at 10pm

PIERRE D'ANGLE > 153, RUE TERRE-NEUVE BRUXELLES-

VILLE 1000

>02/513.38.01

- Monday to Sunday, doors open at 8pm for those who have not slept there the night before. At 9pm for the others.
- (Men only)
- Anonymous assistance, no conditions, free.
- 3-4 evenings during the week (8pm to 10:30pm) Primary medical assistance - Red-Cross.

CENTRE D'ACCUEIL D'URGENCE ARIANE > 132, AVENUE PONT DE LUTTRE FOREST 1190

>02/346.66.60

- Monday to Sunday, 24hrs a day
- Emergency shelter all public (Men, Women, Children)

WHERE TO SEEK MEDICAL ASSISTANCE ?

MEDICAL CARE (EVENING)

MÉDECINS DU MONDE >

- Mondays 6.30 to 8.45pm Rue des sols (Central Station)
- Tuesdays 3pm to 6pm Metro Yzer
- Thursdays 6.30 to 8.45pm Place Simon bolivard (North Station)
- Mobile medical assistance (free)



MENTAL HEALTH (NIGHT)

UNITÉ PSYCHIATRIQUE DE CRISE UCL ST-LUC > WOLUWÉ SAINT-LAMBERT 1200

>02/764.21.21

- Emergency only 7days a week 24/24. Support and diagnostic in Mental health

DRUG USE AND ADDICTION (EVENING)

CLIP - DUNE > 124, AVENUE HENRI JASPAR SAINT-GILLES 1060

>02/538.70.74

Risk Reduction Counter: Home

Monday to Saturday from 7pm - 10:30pm

Nursing service:

Monday to Friday from 7pm - 10:30pm

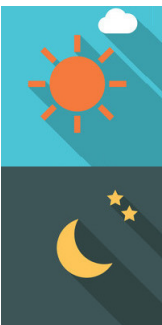
General practitioner:

Monday 7:15pm - 9:15pm and Thursday 2:30pm - 4:15pm

Social Permanence:

Wednesday 7pm - 10:30pm and Thursday 2pm - 5pm





USEFUL CONTACTS

EMERGENCY SOCIAL ACTION PLANS

Night sheltering : emergencies winter dispatching : 0800/99.340

Emergency Support Ariane: 02/346.66.60

Childhood / Teenagers in danger:

- SOS enfant (French): 02/535.34.25 (ULB) et 02/764.20.90 (UCL St Luc)
- Vertrouwenscentrum Kindermishandeling (VK) : tél : 1712

A&E'S (EMERGENCIES)

Emergencies (only) : 100 and 112

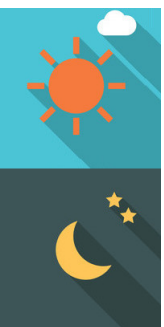
Medical emergencies :

- Garde Bruxelloise: 02/201.22.22
- SOS Médecins: 02/513.02.02
- Vlaamse Wachtdienst: 02/216.79.44

Poisoning Hotline : 070 245 245

Dental Emergencies :

- Global number of dentists watch in Brussels : 02/426 10 26
- Dental clinic : 0471 35 25 69



POLICE

- **Urgence** : 101 Urgence : 101
- **Team Herscham POLBRU** : 02/279.73.10 / Rue du Houblon n°6 (open from 9am to 4pm): Reintegration into the national register / provisional document in case of loss of identity document / various administrative procedures.
- Police chemins de fer (Gare du Nord) : 02/528.17.70 Railway Police (**North Station**)
- Police chemins de fer (Gare du Midi) : 02/528.17.32 Railway Police (**South Station**)
- Police chemins de fer (Gare centrale) : 02/528.14.82 Railway Police (**Central Station**)

OTHER USEFUL CONTACTS AND LISTENING POINTS

- Solitude and loneliness support : Télé-Accueil (107 - 02 538 49 21)
- AIDS : Aide Info Sida (0800 20120)
- Suicide prevention : Centre de Prévention du Suicide (0800 32123)
- Sexual violences : SOS Viol (02 534 36 36)

VOLUNTEERING

RESTOJET > 36, PLACE CARDINAL MERCIER JETTE 1090

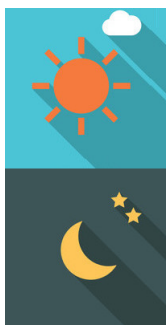
>0499/51.21.50

Search for volunteers to meet people on the street or for administrative support.

Volunteer contact:

Brenda Matter

0484 / 16.79.00



HOBO > 24, RUE DU BOULET BRUXELLES-VILLE 1000

>02/514.26.93

Hobo vzw is looking for enthusiastic volunteers to guide activities for children.

- Pick up children and take them to a reception center
- Guide activities
- Encourage and play with children
- Mediation in any quarrel and offers an attentive ear

Wednesday afternoon (1 pm - 6 pm) or Saturday afternoon (noon - 6 pm).

- Do you like working with children?
- Do you have time to use your weekly on Wednesday or Saturday afternoon?
- Do you want to use some of your free time in a fascinating way?
- Do you speak Dutch and basic French?
- Do you live in Brussels or can you easily move to Brussels?
- Can you work well with others?
- Are you between 17 and 99 years old?

Volunteer contact:

This email address is being protected from spambots. You need JavaScript enabled to view it.

0494/12 28 85

CENTRE DE SERVICE SOCIAL DE BRUXELLES SUD-EST > RUE DE LA CUVE, 1 BRUXELLES 1050

>02/648 50 01

Any type of profile and schedule (social restaurant, homework school, etc.)

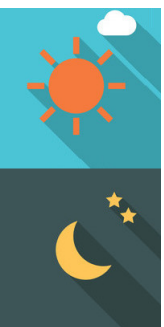
Volunteer contact:

02 / 648.50.01

RESTO DU COEUR DE SAINT-GILLES > 22, RUE DE BOSNIE SAINT-GILLES 1060

>02/538.92.76

FULL FOR THE MOMENT



September-October to participate in the openings in the evening:
from 16h30 to 19h
Volunteer contact:
02/5389276

MÉDECINS DU MONDE >

Any type of profile and schedule

Volunteer contact:

This email address is being protected from spambots. You need JavaScript enabled to view it.

<https://medecinsdumonde.be> to consult our offers

ASBL - SOLIDARITÉ GRANDS FROIDS > RUE DE DANEMARK 74 SAINT-GILLES 1060

>0477 33 85 47

Sorting management Tuesday and Friday afternoon

Collect donations in your area

Distribution in shelters in winter

Animation and accompaniment during our various events

Depending on your availability

Volunteer contact:

This email address is being protected from spambots. You need JavaScript enabled to view it.

32 (0) 477 33 85 47

ESPACE SOCIAL TÉLÉSERVICE > 27, BD DE L'ABATTOIR ANDERLECHT 1070

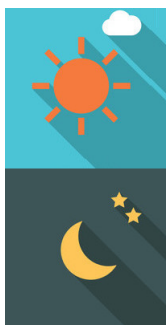
>02/548.98.00

Any type of profile sought

No schedule wanted.

Volunteer contact:

This email address is being protected from spambots. You need JavaScript enabled to view it.



**SOURCE - LA RENCONTRE > 63, RUE DE LA SENNE
BRUXELLES-VILLE 1000**

>02/514.33.32

help in the kitchen, organize an activity with our children, etc.
No schedule desired.

Volunteer contact:

This email address is being protected from spambots. You need JavaScript enabled to view it.

02 / 512.71.75

NATIVITAS > 116-118, RUE HAUTE BRUXELLES-VILLE 1000

>02/512.02.35

bar service, meal service, kitchen help, cloakroom, flea market,
artistic or cultural events, etc.

Handy schedule

Volunteer contact:

This email address is being protected from spambots. You need JavaScript enabled to view it.

02 / 512.02.35

**DOUCHEFLUX > 84, RUE DES VÉTÉRINAIRES ANDERLECHT
1070**

>02/319.58.27

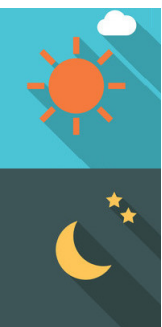
Maintains services in the day center, research hairdressers and
estheticians as well as a bilingual person comfortable with writing
and Office Tools (Word).

Work schedule: Tuesday to Friday from 8:15AM to 12:15PM and
Saturday from 11:15AM to 03:15PM. Volunteers do not work every
day but according to their availability.

Volunteer contact:

This email address is being protected from spambots. You need JavaScript enabled to view it.

+32 (0) 2 319 58 27



L'ILÔT > 33A, PARVIS DE SAINT-GILLES SAINT-GILLES 1060

>02/537.33.33

One-time support for moving and installing our tenants.

Variable schedule (mainly during the week)

Need 1 or 2 volunteers maximum.

Volunteer contact:

This email address is being protected from spambots. You need JavaScript enabled to view it.

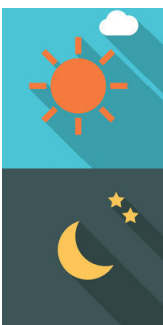
02/7930722

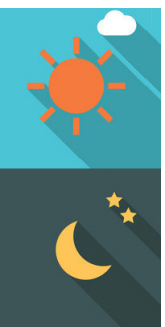
PIERRE D'ANGLE > 153, RUE TERRE-NEUVE BRUXELLES-VILLE 1000

>02/513.38.01

Search for volunteers to support social workers in the distribution of meals, bed sheets, etc. (minimum commitment of three months in the evening from 7 pm to 10 pm)

Volunteer contact: This email address is being protected from spambots. You need JavaScript enabled to view it. or the phonenumber displayed.





Éditeur responsable

La Strada asbl
Centre d'appui au secteur bruxellois de l'aide aux sans-abris
Rue de l'Association 15 - 1000 Bruxelles
www.lastrada.brussels

Avec la participation du CDCS-CMDC et de la Plateforme Citoyenne
BXL Refugees

asbl **CDCS-CMDC** vzw



la Strada

Centre d'appui au secteur bruxellois d'aide aux sans-abri
Steunpunt thuislozenzorg Brussel

Une version online de cette brochure est disponible sur le site
internet de la Strada :
<https://lastradapils.brussels/portail/fr/dispositif-hivernal-1/brochure-hiver.html>

Pour plus d'information, contacter le Centre d'appui :
T : 02/880.86.89

Bruxelles 27-01-2020

