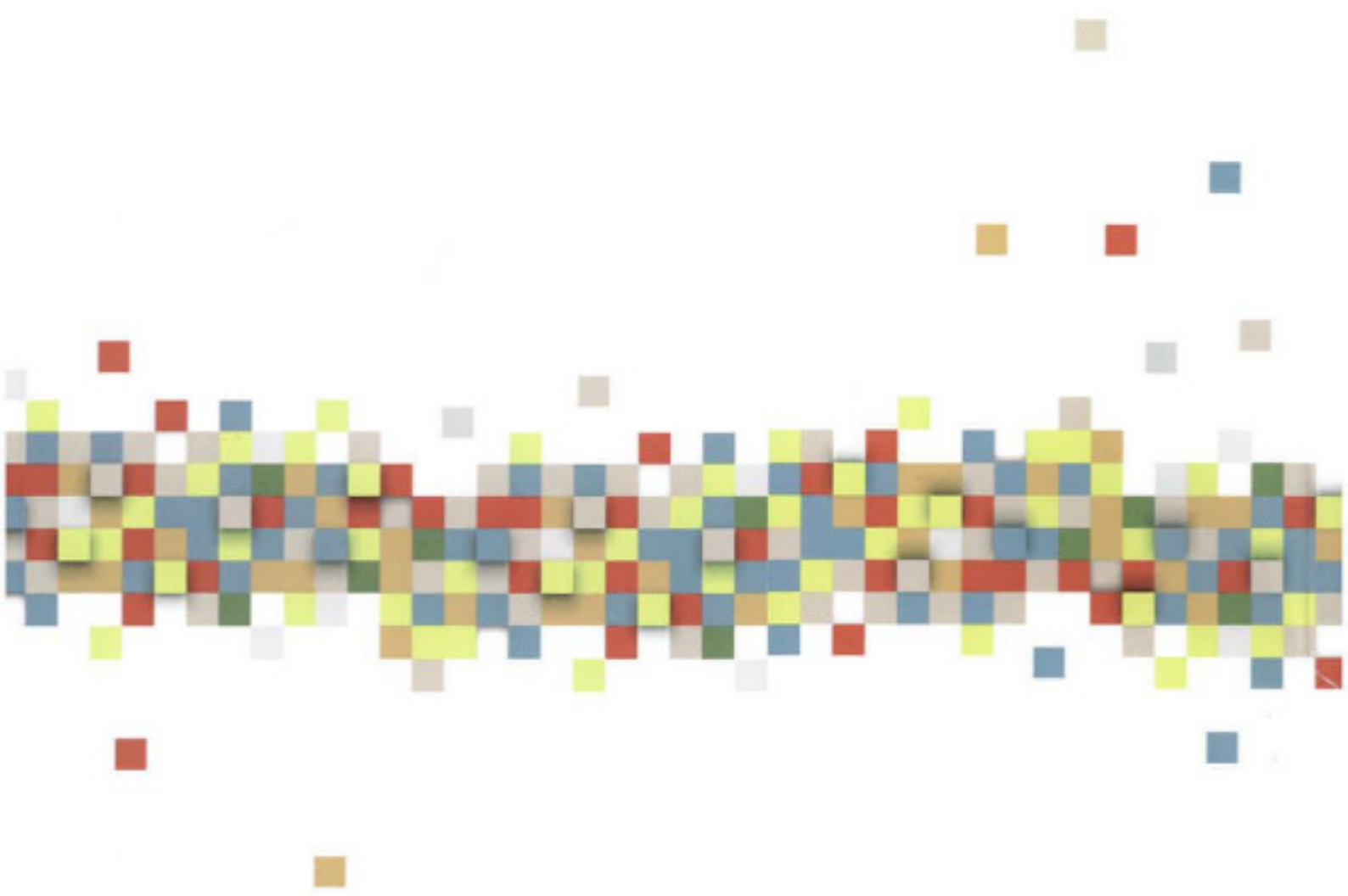


Winter-plan

Winter-brochure 2018-2019

Last update, 25-02-2019



La présente brochure a été sollicitée par le Comité de Concertation Hivernale (CCH) du mois de novembre 2018 pour constituer un outil d'appui aux opérateurs du plan hiver 2018-2019. Elle a été conçue et éditée par la Strada, Centre d'Appui au Secteur Bruxellois de l'Aide aux Sans-abri en novembre 2018. Une attention particulière a été portée à produire une brochure pratique et intuitive tant pour les travailleurs et volontaires du secteur sans-abri que pour les personnes en situation de sans-abrisme. L'offre des services répertoriée est gratuite.

La présente brochure est mise à jour journalièrement dans sa version online téléchargeable ici : <https://lastradapils.brussels/portail/fr/dispositif-hivernal-1/brochure-hiver.html>

Les traductions multilingues (français, néerlandais, arabe, albanais, anglais) proposées sont le fruit de l'engagement et du travail en collaboration avec la Strada. Nous tenons ici à les en remercier.



la Strada

Centre d'appui au secteur bruxellois d'aide aux sans-abri
Steunpunt thuislozenzorg Brussel

Personnes de contact :

Des questions ? Des informations à relayer ou mettre à jour ? Des problèmes avec l'emploi des outils ? N'hésitez pas à nous contacter.

- François BERTRAND, chargé de mission (plan hiver, participation et concertation) : T : 02/880.86.89
Mail : fbertrand@lastrada.brussels
- Philippe LAMBOTTE, Chargé de mission IT : T : 02/880.86.89 Mail : plambotte@lastrada.brussels

Éditeur responsable :

Centre d'appui au secteur bruxellois de l'aide aux sans-abri - la Strada asbl
15, rue de l'association - 1000 - Bruxelles - 02/880.86.89

Bruxelles, 1^{er} janvier 2018 (mis à jour le 25-02-2019)

Ce pdf a été créé avec des programmes open-source, en particulier la bibliothèque mpdf (<https://mpdf.github.io>).

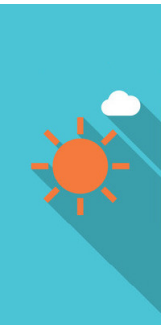
Toute reproduction autorisée sous réserve de citer la source.

Ne pas jeter sur la voie publique

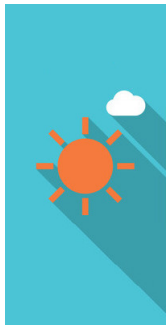
Table of contents

Daytime	3
<i>Where you're welcome during the day :</i>	3
Where to be warm	3
Kids Welcome	7
Where to take a nap? Have a break ?	8
<i>Where to wash?</i>	9
Showers	9
Laundry	12
Public baths	13
<i>Lockers</i>	13
<i>Where to eat</i>	15
Breakfast	15
Lunch	17
Supper (Evening meal)	19
<i>Care</i>	20
Medical care	20
Nursing care	22
Mental health	23
Where to search care for my pet ?	24
Drug use and addiction	25
<i>Social help : where to (re) open / ask for social rights / to receive administrative help?</i>	25
Administrative support	25
CPAS	29
CAW	33
Evening and Night	35
<i>Where to be sheltered at night?</i>	35
<i>Where to seek medical assistance ?</i>	36
Medical care (Evening)	36
Mental Health (Night)	37
Drug use and addiction (evening)	37
Useful Contacts	40
<i>Emergency Social Action Plans</i>	40
<i>A&E's (Emergencies)</i>	40
<i>Police</i>	41
<i>Other useful contacts and listening points</i>	41
<i>volunteering</i>	41

Last update : 25-02-2019



DAYTIME



WHERE YOU'RE WELCOME DURING THE DAY :

WHERE TO BE WARM

**CHAUFFOIR D'ETTERBEEK > RUE GÉNÉRAL TOMBEUR, 54A
ETTERBEEK 1040 > 2018-11-15 2019-04-30**

Monday to Friday from 8:30 AM to 07:00 PM
Saturday and Sunday from 9:00 AM to 05:00 PM

- Warm space, open to all
- support and guidance
- Hot drinks

**RESTAURANT SOCIAL LA RENCONTRE > RUE DE LA SENNE
63 BRUXELLES 1000**

>02/514.33.32
7d/7 : 10 AM to 8 PM.

**ENTRAIDE DE SAINT-GILLES > RUE DE L'EGLISE 59
BRUXELLES 1060**

Open from 8AM to noon.
Social services: Monday to Friday from 8:30AM to 11:00 AM



NATIVITAS > 116-118, RUE HAUTE BRUXELLES-VILLE 1000

>02/512.02.35

Monday to Friday: 9:30 AM to 5PM.

Sale of drinks (20 cents to 25 cents).

Sale of clothes: Tuesday and Thursday for men / Friday for women and children.

L'ILÔT - LE CLOS > 33A, PARVIS DE SAINT-GILLES SAINT-GILLES 1060

>02/537.33.33

- Monday to Sunday from 8:30 AM to 9:30 AM and from 01:30 PM to 6 PM except Wednesday at 3 PM.

CHAUFFOIR DE SAINT-GILLES > 22, RUE DE BOSNIE SAINT-GILLES 1060

>02/538.92.76

- from 4.30pm to 7pm

CHAUFFOIR D'UCCLE > 985, CHAUSSÉE D'ALSEMBERG UCCLE 1180 > 2018-12-01 2019-04-30

- Monday to Friday, 8.30am to 4pm
- Tuesdays and Wednesdays : open from noon to 5pm

- Warm space, open to all
- Coffee, tea, soup (from 1st of december 2018)
- Digital area
- Learn to read/write workshop
- Pets not allowed

**CHAUFFOIR DE SCHAERBEEK > AVENUE CHARLES
GILISQUET, 147 SCHAERBEEK 1030 > 2018-12-11
2019-04-30**

- Monday to Friday, 8.30am to 4pm
- The weekend, 8.30am to 1.30pm

- Warm space, open to all
- Rest area
- Warm drinks, bread and fruits
- Social help and orientation
- Leisure activities
- Pets allowed

**CHAUFFOIR D'IXELLES > 10, RUE DE LA DIGUE IXELLES 1050
> 2018-11-06 2019-03-28**

Tuesday and thursday : 8.30am to 6pm

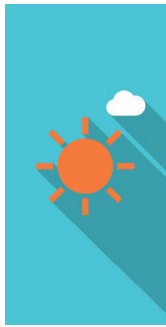
- Warm space, open to all
- support and guidance
- Coffee, Tea and bread
- dogs not allowed
- Snacks (cookies, coffee, tea, fruit, etc.)
- health care

**JAMAIS SANS TOIT > 43, RUE DE VILLERS BRUXELLES-VILLE
1000**

>02/551.17.77

- Monday to Sunday, from 9am to 5pm
- **Off winter plan (May 2018): Monday to friday 9am to 5pm**

- Warm space, open to all



- Rest area
- Soup (noon to 2pm on Saturdays and Sundays)



**ESPACE SOCIAL TÉLÉSERVICE > 27, BD DE L'ABATTOIR
ANDERLECHT 1070**

>02/548.98.13

- Monday to Friday from 8:00 AM to 01 PM and from 2 PM to 5 PM

LATITUDE NORD > 2, PLACE SOLVAY SCHAERBEEK 1030

>02/201.65.50

- Monday, Wednesday and Friday from 9:30am to 12am
- Warm space, open to all
- Warm drinks
- Phone / Social assistance
- Administratives mailboxes
- Needles exchange

**DOUCHEFLUX > 84, RUE DES VÉTÉRINAIRES ANDERLECHT
1070**

>02/319.58.27

- Tuesdays to Fridays from 8.30am to 5pm
- Saturdays and Sundays from 11.30am to 3pm

**SOURCE - LA RENCONTRE > 63, RUE DE LA SENNE
BRUXELLES-VILLE 1000**

>02/514.33.32

- Tuesday from noon to 5:30 PM
- Monday to Friday from 10:30 AM to 5:30 PM
- in winter: Tuesday from noon to 7PM and Wednesday to Sunday from 10 AM to 7 PM

Day care center with psychosocial help desk and support

BIJ ONS - CHEZ NOUS > KARTUIZERSSTRAAT, 60 BRUSSEL-STAD 1000

>02/513.35.96

- Permanence Tuesday from 10AM to 13PM or by appointment (Monday to Friday)

PIERRE D'ANGLE > 153, RUE TERRE-NEUVE BRUXELLES-VILLE 1000

>02/513.38.01

- Monday to Sunday, from 1.30pm to 6:30pm

RESTOJET > 36, PLACE CARDINAL MERCIER JETTE 1090

>0499/51.21.50

- Monday to Friday, from 9am to 5pm

KIDS WELCOME

HOBO > 24, RUE DU BOULET BRUXELLES-VILLE 1000

>02/514.26.93

Wednesdays and Saturdays from noon to 6PM.



Home, activity and apprenticeship project (still to be defined) for out-of-school children aged 5 to 16 years.



**SOURCE - LA RENCONTRE > 63, RUE DE LA SENNE
BRUXELLES-VILLE 1000**

>02/514.33.32

Tuesday from noon to 5:30PM

Wednesday to Sunday from 10AM to 5:30PM

in winter: Tuesday from noon to 7PM and Wednesday to Sunday from 10AM to 7PM

Day reception center.

Basic hygiene kit + child / baby supplies available for free (please try to be punctual because it's a limited service).

Home / specific care for children between 2 years old and 11 years via the Bubble Tree (l'Arbre à Bulles).

WHERE TO TAKE A NAP? HAVE A BREAK ?

PIERRE D'ANGLE > 153, RUE TERRE-NEUVE BRUXELLES-VILLE 1000

>02/513.38.01

- Monday to Sunday 1.30pm to 6:30pm

Registration required

JAMAIS SANS TOIT > 43, RUE DE VILLERS BRUXELLES-VILLE 1000

>02/551.17.77

- From Monday to Sunday, from 9am to 5pm

Soup Monday to Sunday from noon to 1PM

Heated space open to all public

Rest area

First reception
Social services and support

WHERE TO WASH?

SHOWERS

RESTOJET > 36, PLACE CARDINAL MERCIER JETTE 1090

>0499/51.21.50

Monday to Friday at 9:30 am and 4 pm

Free shower

**MISSIONNAIRES DE LA CHARITÉ SAINT-GILLES > AVENUE DU
ROI 69 SAINT-GILLES 1060**

>025394117

Wednesday from 9AM to 10AM (free)

NATIVITAS > 116-118, RUE HAUTE BRUXELLES-VILLE 1000

>02/512.02.35

- Every day except Saturday 9am to 11am

Showers at 1€


**RESTO DU COEUR DE SAINT-GILLES > 22, RUE DE BOSNIE
SAINT-GILLES 1060**

>02/538.92.76

- Monday to Thursday 2pm to 3pm
- Friday from 9am to 11am
- From November 1st to March 15th (except August 1st to 15th)



Registration : 9 AM to 1PM



**SOEURS DE MÈRE THÉRÉSA > 69, AV. DU ROI SAINT-GILLES
1060**

>02/539.41.17

- Wednesday 9 to 10am

**PIERRE D'ANGLE > 153, RUE TERRE-NEUVE BRUXELLES-
VILLE 1000**

>02/513.38.01

- Monday to Sunday 1.30 to 6pm

registration required via phone at 1PM

**BIJ ONS - CHEZ NOUS > KARTUIZERSSTRAAT, 60 BRUSSEL-
STAD 1000**

>02/513.35.96

- Monday, Tuesday, Thursday and Friday from 10:00 AM to 03:00 PM

Shower at 1 €

Free cloakroom (subject to availability)

ROLLING DOUCHE > TOUT LE TERRITOIRE BRUXELLOIS

>0474/41.40.07

On booking :

- Monday to Friday

Static permanence :

- Monday 2 to 6pm: Place Flagey
- Wednesday 2 to 6pm Rue des sols (Central Station)
- Friday 2 to 6pm: Esplanade du Midi (South Station)

LA CONSIGNE ARTICLE 23 > 28, BD DE L'ABATTOIR ANDERLECHT 1000

Monday to Friday from 8h to 13h and by appointment from 14h to 17h.

Shower at 1 €

Foot baths

Shaving

Massage (one Tuesday out of 2)

LA FONTAINE > 346, RUE HAUTE BRUXELLES-VILLE 1000

Open from 9.30 AM to 01.30 PM (in the winter : 02.30 PM), on monday, tuesday, thursday and friday.

- For women : open on 9.30 AM, without registration
- For men : registration at 8.30 AM and opening on 8.30 AM or 11.00 AM

DOUCHEFLUX > 84, RUE DES VÉTÉRINAIRES ANDERLECHT 1070


>02/319.58.27

- Tuesday to friday 8.30 to noon.
- Saturday / Sunday 11.30am to 3pm

Showers at 1€

L'ILÔT - LE CLOS > 33A, PARVIS DE SAINT-GILLES SAINT- GILLES 1060





>02/537.33.33

- Monday to Sunday 9.30am to 11am for showers
- Monday to Sunday 8.30am to 3pm

Showers at 1.50€

LAUNDRY

ENTRAIDE DE SAINT-GILLES > RUE DE L'EGLISE 59 BRUXELLES 1060

Laundry at 1 €

L'ILÔT - LE CLOS > 33A, PARVIS DE SAINT-GILLES SAINT- GILLES 1060

>02/537.33.33

- Monday to Sunday 9.30 to 11am

laundry at 2€

DOUCHEFLUX > 84, RUE DES VÉTÉRINAIRES ANDERLECHT 1070

>02/319.58.27

- Tuesday to friday 8.30 to 11.00am
- Saturdy / Sunday 11.30am to 1.30pm

Laundry at 1€

BULLE ASBL > SERVICE DE LESSIVE MOBILE GRATUIT TOUTE LA RÉGION BRUXELLOISE

>0487/44.88.68

Monday: Place Flagey from 2pm to 6pm

Wednesday: at Latitude Nord (north station) from 1pm to 4pm
Thursday: in L'uzinne from 2pm to 6pm
Friday: South Station (Esplanade of Europe) from 2pm to 6pm
Booking on 0487 / 44 88 68

LA FONTAINE > 346, RUE HAUTE BRUXELLES-VILLE 1000

Open from 9.30 to 13.30 (in the winter : 14.30), on monday, tuesday, thursday and friday.

- For women : open on 9.30, without registration
- For men : registration at 8.30 and opening on 9.30 or 11.00

LA CONSIGNE ARTICLE 23 > 28, BD DE L'ABATTOIR ANDERLECHT 1000

Monday to Friday from 8am to 1pm and by appointment from 2pm to 5pm.

Laundry at 1€

PUBLIC BATHS

BAINS DE BRUXELLES > 28, RUE DU CHEVREUIL BRUXELLES-VILLE 1000

>02/511.24.68


- Tuesday to Saturday 7.30 am to 5pm

Bring the soap and your towel. (€ 2.50)

LOCKERS

RESTOJET > 36, PLACE CARDINAL MERCIER JETTE 1090





>0499/51.21.50
Monday to Friday at 9:30AM and 04:00PM
Lockers available for 0.50€/week.

L'ILÔT - LE CLOS > 33A, PARVIS DE SAINT-GILLES SAINT-GILLES 1060

>02/537.33.33

- from 8.30am to noon and from 01.30pm to 6pm (Wednesday until 3pm) - (on waiting list)

Lockers for 1€/week

DOUCHEFLUX > 84, RUE DES VÉTÉRINAIRES ANDERLECHT 1070

>02/319.58.27

- From Tuesday to Friday 8.30 am to 6pm
- Saturday / Sunday 11.30 to 6pm

Lockers (1, 1.5€ or 2€ [depend the size])

LA CONSIGNE ARTICLE 23 > 28, BD DE L'ABATTOIR ANDERLECHT 1000

- Monday to friday 8 am to 1pm and 2 to 5pm

Lockers for 1€/mounth

JAMAIS SANS TOIT > 43, RUE DE VILLERS BRUXELLES-VILLE 1000

>02/551.17.77

- Monday to Sunday 9am to 5pm

Lockers for 2.40€/month

WHERE TO EAT

BREAKFAST

RESTOJET > 36, PLACE CARDINAL MERCIER JETTE 1090

>0499/51.21.50

Monday to Friday from 9:30 to 11:00

Free breakfast

LA CONSIGNE ARTICLE 23 > 28, BD DE L'ABATTOIR ANDERLECHT 1000

Monday to Friday from 8am to 1pm and with from 2pm to 5pm.

Breakfast ((subject to availability)

ENTRAIDE DE SAINT-GILLES > RUE DE L'EGLISE 59 BRUXELLES 1060

Monday to Friday from 8:30am to 10:00am : coffee and free breakfast.

Soup from 10:15am to 11am.

Social support: Monday to Friday from 8:30am to 11am.

EDUCATEURS DE RUE DE LA COMMUNE DE SAINT-GILLES > RUE VANDERSCHRICK 71 SAINT-GILLES 1060

>02/539.23.91

Every first and third Monday from 9:00am to 11:00am

Free breakfast in the South Station.





**RESTAURANT SOCIAL LA RENCONTRE > RUE DE LA SENNE
63 BRUXELLES 1000**

>02/514.33.32

Open 7d/7 from 10am to 8pm.

Free breakfast at 10.15am.

**RESTO DU COEUR DE SAINT-GILLES > 22, RUE DE BOSNIE
SAINT-GILLES 1060 > 2018-11-20 2019-03-31**

>02/538.92.76

- Monday to Friday from 8.30 AM to 10 AM (up to the 31th of March 2019)

Free breakfast

**L'ILÔT - LE CLOS > 33A, PARVIS DE SAINT-GILLES SAINT-
GILLES 1060**

>02/537.33.33

- Monday to Sunday at 8.30am (with ticket)

Breakfast (1€)

Coffie and juice (0.30€)

**PETITES SOEURS DES PAUVRES > 266, RUE HAUTE
BRUXELLES-VILLE 1000**

>02/512.52.12

- Monday to Sunday 9am to 10am

Distribution of sandwiches

BIJ ONS - CHEZ NOUS > KARTUIZERSSTRAAT, 60 BRUSSEL-

STAD 1000

>02/513.35.96

- Monday to Saturday 7am to 11.30am

Free breakfast with drinks (subject to availability).

Coffie (0.30€)



LUNCH

RESTAURANT SOCIAL LA RENCONTRE > RUE DE LA SENNE 63 BRUXELLES 1000

>02/514.33.32

Open : 7d/7 from 10AM to 8PM

Free soup from 12:30pm to 1pm

RESTO DU COEUR DE SAINT-GILLES > 22, RUE DE BOSNIE SAINT-GILLES 1060

>02/538.92.76

Soup, bread, cheese and cured meats (for free).

NATIVITAS > 116-118, RUE HAUTE BRUXELLES-VILLE 1000

>02/512.02.35

Monday to Friday every two Saturdays from 12:00pm to 1:30pm.

Lunch for 1,50€ (Lunch, coffee and dessert) or 2€ (with soup)

MISSIONNAIRES DE LA CHARITÉ SAINT-GILLES > AVENUE DU ROI 69 SAINT-GILLES 1060

>025394117

Wednesday, Friday and Saturday: free hot meal from 2:30PM to 3:15PM. Second service at 3:15PM.

Tuesday: free meal at 3:15 pm

Sunday: free meal at 4PM and 4:45PM.
Closed on Mondays and Thursdays.



**BIJ ONS - CHEZ NOUS > KARTUIZERSSTRAAT, 60 BRUSSEL-
STAD 1000**

>02/513.35.96

Monday to Saturday from 11:30 AM to 3 PM

Lunch : 1€

Drinks : 0.30€

Soup and bread (subject to availability)

POVERELLO > 105, RUE VERTE SCHAERBEEK 1030

>02/2019.98.62

- Monday to Friday from 12 to 3 PM (not in public holiday and the weekend)

Lunch + Dessert : 1€

Soup, drinks, coffee and tea : 0,20€

Breakfast (in pack) : 1€

**L'ILÔT - LE CLOS > 33A, PARVIS DE SAINT-GILLES SAINT-
GILLES 1060**

>02/537.33.33

- Monday to Sunday at noon

Lunch (with ticket)

**SOURCE - LA RENCONTRE > 63, RUE DE LA SENNE
BRUXELLES-VILLE 1000**

>02/514.33.32

- Monday to Sunday at noon

Free meal (breakfast / soup and bread / full dinner) subject to availability.

Tea and coffee at 0.50 €

RESTOJET > 36, PLACE CARDINAL MERCIER JETTE 1090

>0499/51.21.50

Monday to Friday from 11.30am to 2.30pm

Soup 0,50€

Lunch 2€

SUPPER (EVENING MEAL)

EDUCATEURS DE RUE DE LA COMMUNE DE SAINT-GILLES > RUE VANDERSCHRICK 71 SAINT-GILLES 1060

>02/539.23.91

The second and fourth Tuesdays from 6pm to 9pm

Free coffee, soup and sandwiches into the South Station (Gare du midi).

RESTAURANT SOCIAL LA RENCONTRE > RUE DE LA SENNE 63 BRUXELLES 1000

>02/514.33.32

Open : 7d/7 from 10AM to 8PM

Hot meal from 5:45 PM to 7PM (3.50€)

OPÉRATION THERMOS > STATION DE MÉTRO BOTANIQUE

- Monday to Friday at 8pm (the Metro Station is closed during distribution, be on time!)



**PROTESTANTS SOCIAAL CENTRUM > CANSSTRAAT, 12
ELSENE 1050**

>02/512.80.80

- Monday to Friday at 6pm

**SOURCE - LA RENCONTRE > 63, RUE DE LA SENNE
BRUXELLES-VILLE 1000**

>02/514.33.32

- Monday to Sunday at 5.45pm

Soup + bread (subject to availability)

Free lunch (80 seats max)

Tea and coffee 0.50€

CARE

MEDICAL CARE

**ASBL - SOLIDARITÉ GRANDS FROIDS > RUE DE DANEMARK
74 SAINT-GILLES 1060**

>0477 33 85 47

Doctor and nurse: Every Tuesday from 12pm to 4pm.

Cloakroom: Every Tuesday, Thursday and Friday from 1pm to 4pm.

Access to services only on presentation of a paper from your social worker or educator.

FREE CLINIC > CHAUSSÉE DE WAVRE 154/A IXELLES

>02 512 13 14

- Monday to Friday 8:45am to 6pm

MÉDECINS DU MONDE >

Monday: from 6:30pm to 8:45pm: Central Station - Rue des Sols

Tuesday: from 3pm to 6pm: Metro Yzer - Place sainteclette / from 6:30pm to 8:45pm : Midi Station - Esplanade of Europe / from 9pm to 10:15pm : Avenue Louise (partner with Dune)

Thursday: from 3pm to 6pm: Metro Yzer - Place sainteclette / from 6.30pm to 8.45pm: Gare du Nord - Simon Bolivard Square

- Free mobile medical consultations

GARDE BRUXELLOISE > 2, RUE J. DE BROUCHOVEN DE BERGEYCK BRUXELLES-VILLE 1000

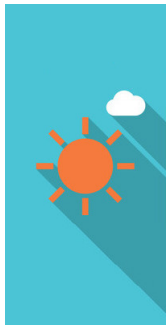
>02/201.22.22

- Monday to Friday from 9am to 6pm
- For everyone
- General Medical Consultations

MAISON D'ACCUEIL SOCIO-SANITAIRE DE BRUXELLES (MASS) > 16-18 RUE DE WOERINGEN BRUXELLES-VILLE 1000

>02/505.32.97 | 02/205.32.90

- Monday, Wednesday, and Friday from 10am to 7pm
- Tuesday and Thursday from 11am (2pm for thursday) to 7pm
- Emergencies: Saturday from 10am to 1pm. No new patients
- Drug users
- Medical, nursing and social and mental health



**CLIP - DUNE > 124, AVENUE HENRI JASPAR SAINT-GILLES
1060**

>02/538.70.74

Médecin :

- Thursday from 2pm to 4pm and monday from 7pm to 9pm

Medibus (place Saintcetelette Molenbeek) :

- Monday (ribaucourt), tuesday and thursday (Molenbeek) from 3pm to 6pm

For drug users:

nursing, general medical care

reducing the risks associated with drug use (e.a. access to sterile injection equipment)

medico-psychosocial accompaniment

NURSING CARE

LA FONTAINE > 346, RUE HAUTE BRUXELLES-VILLE 1000

Open from 9.30 to 13.30 (in the winter : 14.30), on monday, tuesday, thursday and friday.

- For women : open on 9.30, without registration
- For men : registration at 8.30 and opening on 9.30 or 11.00

- nursing care
- dental care
- lice/ treatment

**DOUCHEFLUX > 84, RUE DES VÉTÉRINAIRES ANDERLECHT
1070**

>02/319.58.27

- Tuesday to Friday from 2pm to 4pm
- Nurse care

INFIRMIERS DE RUE > TOUTE LA RÉGION

>0488/11.93.55

- Monday to Friday 9am to 1pm and from 2 to 5:30pm
- Nursing care
- Street work

MENTAL HEALTH

SERVICE SOCIAL JUIF > 68, AVENUE DUCPÉTIAUX SAINT-GILLES 1060

>02/538.70.74

- From Monday to Friday from 8.30 to 12.30pm and from 12.30pm to 1.30pm
- Mental health (Psychologists, Psychiatrics)
- Psychiatrics experts for persons victims of wars

SERVICE DE SANTÉ MENTALE ULYSSE > 52, RUE DE L'ERMITAGE IXELLES 1050

- Mondays, Tuesdays and Wednesdays from 9.30am to 6pm
- Thursdays and Fridays from 9.30am to 5pm
- Medical, nursing and social and mental support for refugees and



war victims and organised violence victims



EQUIPE MOBILE DE CRISE BRUXELLES EST >

>0490/11.42.00

- Contact only by phone, Monday to Friday (Except Holidays) from 9am to 9pm
- Multidisciplinary intervention team / Mental Care

EQUIPES HERMÈS+ ET TANDEM+ >

>02/201.22.00

- Contact only by phone, Monday to Friday (Except Holidays) from 9am to 3pm
- Multidisciplinary intervention team / Mental Care

WHERE TO SEARCH CARE FOR MY PET ?

DISPENSARE DE LA FONDATION PRINCE LAURENT > 72-73, PLACE DU JEU DE BALLE BRUXELLES-VILLE 1000

>02/511.66.46

- Monday to Friday from 10 to 12pm
- Closing for holidays: Monday 24/12/2018, Tuesday 25/12/2018 and Monday 01/01/2019

DRUG USE AND ADDICTION

LATITUDE NORD > 2, PLACE SOLVAY SCHAERBEEK 1030

>02/201.65.50

Syringe exchange counter, with a used syringe recuperator available 24 hours a day

Monday to friday: 8am - 4pm

Psychological support and prevention for drug takers.



SOCIAL HELP : WHERE TO (RE) OPEN / ASK FOR SOCIAL RIGHTS / TO RECEIVE ADMINISTRATIVE HELP?

ADMINISTRATIVE SUPPORT

**ASBL PLATEFORME CITOYENNE DE SOUTIEN AUX RÉFUGIÉS -
BXLREFUGÉES > RUE WASHINGTON 186 BRUXELLES 1050**

This email address is being protected from spambots. You need JavaScript enabled to view it.

Open Monday to Saturday from 1PM to 5PM.

Services:

- Social Information, Administrative Service (SISA) and asylum procedures (and orientation to other structures) on Mondays, Wednesdays and Fridays from 2PM to 6PM. This email address is being protected from spambots. You need JavaScript enabled to view it.
- French / Dutch / English lessons every afternoon This email address is being protected from spambots. You need JavaScript enabled to view it.
- Computer Wednesday and Saturday afternoons This email address is being protected from spambots. You need JavaScript

enabled to view it.



**EDUCATEURS DE RUE DE LA COMMUNE DE SAINT-GILLES >
RUE VANDERSCHRICK 71 SAINT-GILLES 1060**

>02/539.23.91

Social services: Tuesday, Wednesday and Thursday: 10am to 1pm.

LATITUDE NORD > 2, PLACE SOLVAY SCHAERBEEK 1030

>02/201.65.50

Permanences:

Monday, Wednesday and Friday from 9AM to noon.

Thursday from 4:30PM to 7:30PM (from October to April)

Tuesday from 9AM to noon (the permanence is open only for women).

Administrative, psychological and social accompaniment

**SERVICE JUSTICE DE PROXIMITÉ - PERMANANCES
JURIDIQUES GÉNÉRALISTES > 126, RUE DE LA VICTOIRE
(BIENTÔT À PLACE BROODTHAERS 7-8) SAINT-GILLES 1060**

>02/542.62.40

Every 1st and 3rd Mondays from 9am to 11am, at the train station at noon with street educators from the municipality of Saint-Gilles.

LA POISSONERIE > 214, RUE DU PROGRÈS BRUXELLES 1000

Monday to Friday (only with an appointment) : 0479/68.60.20

Help and support in the reopening of social rights

Support for opening and maintaining a reference address

**ENTRAIDE DE SAINT-GILLES > RUE DE L'EGLISE 59
BRUXELLES 1060**

Social services: Monday to Friday from 8:30 to 11am.

BIJ ONS - CHEZ NOUS > KARTUIZERSSTRAAT, 60 BRUSSEL-STAD 1000

>02/513.35.96

Every day from 9am to 3pm except Wednesday

Social assistance and distribution of blankets (depending on available stock) from 10am to 4.30pm

NATIVITAS > 116-118, RUE HAUTE BRUXELLES-VILLE 1000

>02/512.02.35

Social service Tuesday, Wednesday and Thursday from 9:30am to 11:30am

Legal office Monday from 10am to 11:30am

Public writer on Mondays and Thursdays from 1.30 pm to 4.30 pm

RESTO DU COEUR DE SAINT-GILLES > 22, RUE DE BOSNIE SAINT-GILLES 1060

>02/538.92.76

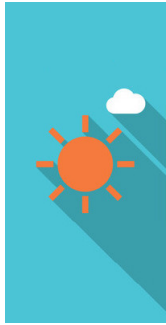
Social service: thursday and Friday from 9am to 10am and from 11am to 1pm

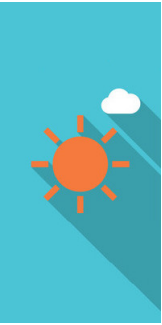
RESTAURANT SOCIAL LA RENCONTRE > RUE DE LA SENNE 63 BRUXELLES 1000

>02/514.33.32

Social service: Monday to Friday from 11am to 12pm and from 2pm to 5:30pm

SOURCE - LA RENCONTRE > 63, RUE DE LA SENNE BRUXELLES-VILLE 1000





>02/514.33.32

- Tuesday from 12pm to 7pm
From Wednesday to Sunday from 10am to 7pm

Welcome center + support

Social permanence from Tuesday to Friday.

Computer workshop available on Saturday.

PIERRE D'ANGLE > 153, RUE TERRE-NEUVE BRUXELLES-VILLE 1000

>02/513.38.01

- Monday to Thursday from 8am to 4pm
- Friday from 8am to 2pm

L'ILÔT - LE CLOS > 33A, PARVIS DE SAINT-GILLES SAINT-GILLES 1060

>02/537.33.33

- Monday to Sunday from 8.30am to 6pm
- Wednesday from 8.30am to 3pm

Administrative and psycho-social support available

DOUCHEFLUX > 84, RUE DES VÉTÉRINAIRES ANDERLECHT 1070

>02/319.58.27

- Tuesday to Friday from 8.30am to 5pm

Psychosocial permanences

CPAS

CPAS D'ANDERLECHT > 4, RUE VAN LINT ANDERLECHT 1070

>02/529.41.20

- Monday to Friday from 8 to 12am and 1 to 4.30pm
- Summer opening hours from 7 am to 2pm

CPAS D'AUDERGHEM > 87, AVENUE DU PAEPEDELLE AUDERGHEM 1160

>02/679.94.10 || 02/679.94.61

- Opening hours frm 9am to 12am
- Afternoons on appointment

CPAS DE BERCHEM-ST-AGATHE > 88, AVENUE DU ROI ALBERT BERCHEM-SAINTE-AGATHE 1082

>02/482.13.27

- Opening Hours from 8.30 to 12am
- 1 to 4.30pm on appointment

CPAS DE LA VILLE DE BRUXELLES > 298 A, RUE HAUTE BRUXELLES-VILLE 1000

>02/543.61.11 || 02/543.60.90

- Monday to Thursday from 8 to 12am and 1 to 5pm
- Friday from 8 to 12am and 1 to 3pm

CPAS D'ETTERBEEK > 2, SQUARE DOCTEUR JEAN JOLY



ETTERBEEK 1040

>02/627.21.11

- Monday to Friday from 8.30 to 12am and 2 to 4pm

CPAS D'EVERE > 11, SQUARE SERVAES HOEDEMAEKERS EVERE 1140

>02/247.65.65

- Monday to Friday from 8.30 am to 1pm
- Tuesday from 5 to 8pm

CPAS DE FOREST > 35, RUE DU CURÉ FOREST 1190

>02/349.63.00

- Monday to Friday from 8 to 11.30am
- Afternoon on appointments

CPAS DE GANSHOREN > 63, AVENUE DE LA RÉFORME GANSHOREN 1083

>02/422.57.57

- Monday to Friday from 8 to 12am and 1 to 4.30pm
- Social support from 8.30 to 11am

CPAS D'IXELLES > 92, CHAUSSÉE DE BOONDAEL IXELLES 1050

>02/641.54.59

- Monday to Friday from 8.0 to 11.45am and 1.15 to 3.30pm
- Thursday from 1.15 to 3.30pm

**CPAS DE JETTE > 47/49, RUE DE L'ÉGLISE SAINT-PIERRE
JETTE 1090**

>02/422.46.11

- Monday to Friday from 8.30 to 12.15am and 1.15 to 4pm

**CPAS DE KOEKELBERG > 39, RUE FRANÇOIS DELCOIGNE
KOEKELBERG 1081**

>02/412.16.11

- Monday to Friday from 8.30 to 11am

**CPAS DE MOLENBEEK ST-JEAN > 14, RUE ALPHONSE
VANDENPEEREBOOM MOLENBEEK 1080**

>02/412.53.11

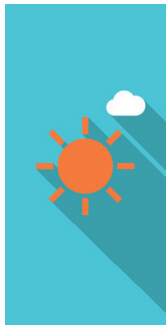
- Monday to Friday from 7.55 to 12am and 12.30am to 4.45pm
- Summer opening hours from 7 am to 2pm


**CPAS DE ST-GILLES > 40, RUE FERNAND BERNIER SAINT
GILLES 1060**

>02/600.54.11

- Monday to Friday from 8 to 12am

**CPAS DE SAINT JOSSE TEN NOODE > 88, RUE VERBIST
SAINT-JOSSE-TEN-NOODE 1210**





>02/220.29.11

- Monday to Thursday 8.45 to 11.45 am
- or on appointment

**CPAS DE SCHAERBEEK > BOULEVARD AUGUSTE REYERS 70
SCHAERBEEK 1030**

>02/240.30.80

- Monday to Thursday from 8 to 12am and from 12.45am to 4.30pm

CPAS D'UCCLE > 860, CHAUSSÉE D'ALSEMBERG UCCLE 1180

>02/370.75.11

- Monday to Friday from 8.30 to 12.30am and 13.30 to 5pm

**CPAS DE WATERMAEL-BOITSFORT > 69, RUE DU LOU TRIER
WATERMAEL-BOITSFORT 1170**

>02/663.08.00

- Monday to Friday from 8.30 to 10.30am afternoon on appointments

**CPAS DE WOLUWE ST LAMBERT > WOLUWE-SAINT-LAMBERT
1200**

>02/777.75.11

- Monday to Friday from 8.30 to 12am and 1.30 to 5pm (on appointments)

**CPAS DE WOLUWE ST PIERRE > 15, DRÈVE DES SHETLANDS
WOLUWE-SAINT-PIERRE 1150**

>02/773.59.00

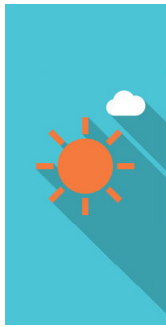
- From 8.30 to 11am and the afternoons on appointments

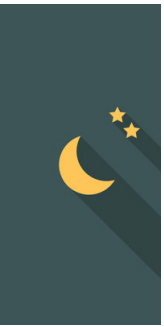
CAW

**CAW DE BRUXELLES > 34, BD D'ANVERS BRUXELLES-VILLE
1000**

>02/289.60.10

- Monday to Friday from 9 to 12pm (closed on Thursday)





EVENING AND NIGHT

WHERE TO BE SHELTERED AT NIGHT?

PORTE D'ULYSSE > 6 RUE DU PLANEUR BRUXELLES 1130

>0488 14 26 18

Reception from 07:00PM to 11:30AM.

This email address is being protected from spambots. You need JavaScript enabled to view it.

Night shelter center of 350 beds.

Permanence of the Social and Administrative Information Service from Monday to Friday morning.

SAMUSOCIAL - PETIT REMPART > 5, RUE PETIT REMPART BRUXELLES-VILLE 1000

>Numéro vert: 0800/99.340

- Monday to Sunday 24/24. During the winter reservations on free phone call 0800/99 340
- For everyone

During winter times, an other center is open in Haren. Monday to



Sunday, 24/24,

PIERRE D'ANGLE > 153, RUE TERRE-NEUVE BRUXELLES-VILLE 1000

>02/513.38.01

- Monday to Sunday, doors open at 8pm for those who have not slept there the night before. At 9pm for the others.
- (Men only)
- Anonymous assistance, no conditions, free.

CENTRE D'ACCUEIL D'URGENCE ARIANE > 132, AVENUE PONT DE LUTTRE FOREST 1190

>02/346.66.60

- Monday to Sunday, 24hrs a day
- Emergency shelter all public (Men, Women, Children)

WHERE TO SEEK MEDICAL ASSISTANCE ?

MEDICAL CARE (EVENING)

MÉDECINS DU MONDE >

- Mondays 6.30 to 8.45pm Rue des sols (Central Station)
- Tuesdays 6.30 to 8.45pm Esplanade de l'Europe (South Station)
/ 3pm to 6pm Metro Yzer / 9pm to 10.15pm Avenue Louise

- Thursdays 6.30 to 8.45pm Place Simon bolivard (North Station) / 3pm to 6pm Metro Yzer
- Mobile medical assistance (free)

MENTAL HEALTH (NIGHT)

UNITÉ PSYCHIATRIQUE DE CRISE UCL ST-LUC > WOLUWÉ SAINT-LAMBERT 1200

>02/764.21.21

- Emergency only 7days a week 24/24. Support and diagnostic in Mental health

EQUIPE MOBILE DE CRISE BRUXELLES EST >

>0490/11.42.00

- Only by call. Monday to Friday (except holidays) from 9am to 9pm 0490 / 11 42 00
- Multidisciplinary intervention team / Mental Care

DRUG USE AND ADDICTION (EVENING)

CLIP - DUNE > 124, AVENUE HENRI JASPAR SAINT-GILLES 1060

>02/538.70.74

Risk Reduction Counter: Home

Monday to Friday from 7pm - 10:45pm

Nursing service:

Monday to Friday from 7pm - 10:30pm



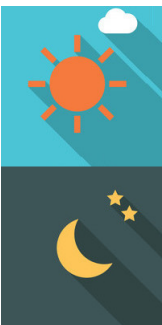
General practitioner:

Monday 7:15pm - 9:15pm

Social Permanence:

Wednesday 7pm - 10:30pm and Thursday 2pm - 5pm





USEFUL CONTACTS

EMERGENCY SOCIAL ACTION PLANS

Night sheltering : emergencies winter dispatching : 0800/99.340

Emergency Support Ariane: 02/346.66.60

Childhood / Teenagers in danger:

- SOS enfant (French): 02/535.34.25 (ULB) et 02/764.20.90 (UCL St Luc)
- Vertrouwenscentrum Kindermishandeling (VK) : tél : 1712

A&E'S (EMERGENCIES)

Emergencies (only) : 100 and 112

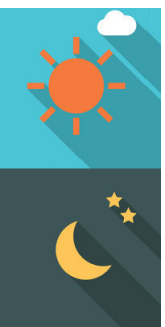
Medical emergencies :

- Garde Bruxelloise: 02/201.22.22
- SOS Médecins: 02/513.02.02
- Vlaamse Wachtdienst: 02/216.79.44

Poisoning Hotline : 070 245 245

Dental Emergencies :

- Global number of dentists watch in Brussels : 02/426 10 26
- Dental clinic : 0471 35 25 69



POLICE

- **Urgence** : 101 Urgence : 101
- **Team Herscham POLBRU** : 02/279.73.10 / Rue du Houblon n°6 (open from 9am to 4pm): Reintegration into the national register / provisional document in case of loss of identity document / various administrative procedures.
- Police chemins de fer (Gare du Nord) : 02/528.17.70 Railway Police (**North Station**)
- Police chemins de fer (Gare du Midi) : 02/528.17.32 Railway Police (**South Station**)
- Police chemins de fer (Gare centrale) : 02/528.14.82 Railway Police (**Central Station**)

OTHER USEFUL CONTACTS AND LISTENING POINTS

- Solitude and loneliness support : Télé-Accueil (107 - 02 538 49 21)
- AIDS : Aide Info Sida (0800 20120)
- Suicide prevention : Centre de Prévention du Suicide (0800 32123)
- Sexual violences : SOS Viol (02 534 36 36)

VOLUNTEERING

RESTOJET > 36, PLACE CARDINAL MERCIER JETTE 1090

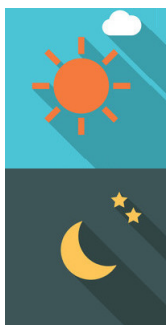
>0499/51.21.50

Search for volunteers to meet people on the street or for administrative support.

Volunteer contact:

Brenda Matter

0484 / 16.79.00



HOBO > 24, RUE DU BOULET BRUXELLES-VILLE 1000

>02/514.26.93

Hobo vzw is looking for enthusiastic volunteers to guide activities for children.

- Pick up children and take them to a reception center
- Guide activities
- Encourage and play with children
- Mediation in any quarrel and offers an attentive ear

Wednesday afternoon (1 pm - 6 pm) or Saturday afternoon (noon - 6 pm).

- Do you like working with children?
- Do you have time to use your weekly on Wednesday or Saturday afternoon?
- Do you want to use some of your free time in a fascinating way?
- Do you speak Dutch and basic French?
- Do you live in Brussels or can you easily move to Brussels?
- Can you work well with others?
- Are you between 17 and 99 years old?

Volunteer contact:

This email address is being protected from spambots. You need JavaScript enabled to view it.

0494/12 28 85

CENTRE DE SERVICE SOCIAL DE BRUXELLES SUD-EST > RUE DE LA CUVE, 1 BRUXELLES 1050

>02/648 50 01

Any type of profile and schedule (social restaurant, homework school, etc.)

Volunteer contact:

02 / 648.50.01

RESTO DU COEUR DE SAINT-GILLES > 22, RUE DE BOSNIE SAINT-GILLES 1060

>02/538.92.76

FULL FOR THE MOMENT



September-October to participate in the openings in the evening:
from 16h30 to 19h
Volunteer contact:
02/5389276

MÉDECINS DU MONDE >

Any type of profile and schedule

Volunteer contact:

This email address is being protected from spambots. You need JavaScript enabled to view it.

<https://medecinsdumonde.be> to consult our offers

ASBL - SOLIDARITÉ GRANDS FROIDS > RUE DE DANEMARK 74 SAINT-GILLES 1060

>0477 33 85 47

Sorting management Tuesday and Friday afternoon

Collect donations in your area

Distribution in shelters in winter

Animation and accompaniment during our various events

Depending on your availability

Volunteer contact:

This email address is being protected from spambots. You need JavaScript enabled to view it.

32 (0) 477 33 85 47

ESPACE SOCIAL TÉLÉSERVICE > 27, BD DE L'ABATTOIR ANDERLECHT 1070

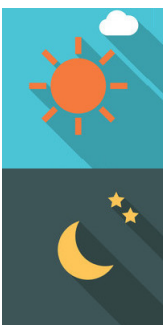
>02/548.98.13

Any type of profile sought

No schedule wanted.

Volunteer contact:

This email address is being protected from spambots. You need JavaScript enabled to view it.



**SOURCE - LA RENCONTRE > 63, RUE DE LA SENNE
BRUXELLES-VILLE 1000**

>02/514.33.32

help in the kitchen, organize an activity with our children, etc.

No schedule desired.

Volunteer contact:

This email address is being protected from spambots. You need JavaScript enabled to view it.

02 / 512.71.75

OPÉRATION THERMOS > STATION DE MÉTRO BOTANIQUE

Supervision of services at Botanique metro station, preparation of the station, installation of equipment, etc.

From November 1st to April 30th. You must be available from 7:30PM to 10:00PM and for a minimum of 2x per month (more if you wish).

Volunteer contact:

This email address is being protected from spambots. You need JavaScript enabled to view it.

NATIVITAS > 116-118, RUE HAUTE BRUXELLES-VILLE 1000

>02/512.02.35

bar service, meal service, kitchen help, cloakroom, flea market, artistic or cultural events, etc.

Handy schedule

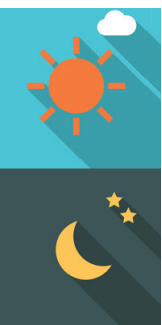
Volunteer contact:

This email address is being protected from spambots. You need JavaScript enabled to view it.

02 / 512.02.35

**DOUCHEFLUX > 84, RUE DES VÉTÉRINAIRES ANDERLECHT
1070**

>02/319.58.27



Maintains services in the day center, research hairdressers and estheticians as well as a bilingual person comfortable with writing and Office Tools (Word).

Work schedule: Tuesday to Friday from 8:15AM to 12:15PM and Saturday from 11:15AM to 03:15PM. Volunteers do not work every day but according to their availability.

Volunteer contact:

This email address is being protected from spambots. You need JavaScript enabled to view it.

+32 (0) 2 319 58 27

L'ILÔT - LE CLOS > 33A, PARVIS DE SAINT-GILLES SAINT-GILLES 1060

>02/537.33.33

One-time support for moving and installing our tenants.

Variable schedule (mainly during the week)

Need 1 or 2 volunteers maximum.

Volunteer contact:

This email address is being protected from spambots. You need JavaScript enabled to view it.

02/7930722

CHAUFFOIR D'IXELLES > 10, RUE DE LA DIGUE IIXELLES 1050

2 to 3 hours on Tuesday morning and / or Thursday morning from 8:00 to 13:00, once a week or every two weeks.

The reception of the day opens its doors from November 6, 2018 to March 28, 2019.

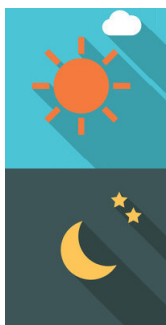
As a volunteer, you will be sent to:

- participate in the preparation of hot drinks and the place,
- welcome and listen to people,
- be able to guide people to refer to the professionals present (social workers, educators),

You will work with another volunteer.

Volunteer contact:

This email address is being protected from spambots. You need JavaScript enabled to view it.



JavaScript enabled to view it.

BIJ ONS - CHEZ NOUS > KARTUIZERSSTRAAT, 60 BRUSSEL-STAD 1000

>02/513.35.96

FULL FOR THE MOMENT

During the winter plan period, volunteers are present during the opening hours of the social restaurant, Monday to Saturday from 7:00 to 15:00. Normally from 9:00 to 15:00.

Volunteer contact:

This email address is being protected from spambots. You need JavaScript enabled to view it.

02.513.35.96

SAMUSOCIAL - PETIT REMPART > 5, RUE PETIT REMPART BRUXELLES-VILLE 1000

>Numéro vert: 0800/99.340

FULL FOR THE MOMENT

the period preceding the winter / end of year holidays (24 and 31 December).

the period preceding the winter = refresh of the centers (brushstroke) and help to set up the centers (from October to mid-November, priority is given to groups, groups of teams)

Volunteer contact:

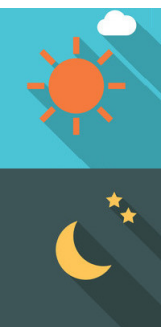
This email address is being protected from spambots. You need JavaScript enabled to view it.

02.247.90.72

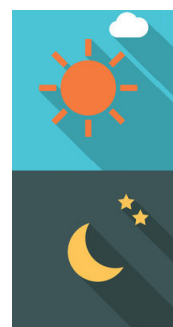
PIERRE D'ANGLE > 153, RUE TERRE-NEUVE BRUXELLES-VILLE 1000

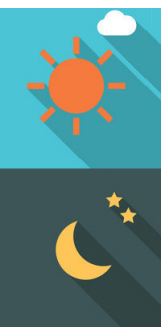
>02/513.38.01

Search for volunteers to support social workers in the distribution of meals, bed sheets, etc. (minimum commitment of three months in the evening from 7 pm to 10 pm)



Volunteer contact: This email address is being protected from spambots. You need JavaScript enabled to view it. or the phonenumber displayed.





Éditeur responsable

La Strada asbl
Centre d'appui au secteur bruxellois de l'aide aux sans-abris
Rue de l'Association 15 - 1000 Bruxelles
www.lastrada.brussels

Avec la participation du CDCS-CMDC et de la Plateforme Citoyenne
BXL Refugees

asbl **CDCS-CMDC** vzw



la Strada

Centre d'appui au secteur bruxellois d'aide aux sans-abri
Steunpunt thuislozenzorg Brussel

Une version online de cette brochure est disponible sur le site
internet de la Strada :
<https://lastradapils.brussels/portail/fr/dispositif-hivernal-1/brochure-hiver.html>

Pour plus d'information, contacter le Centre d'appui :
T : 02/880.86.89

Bruxelles 25-02-2019

